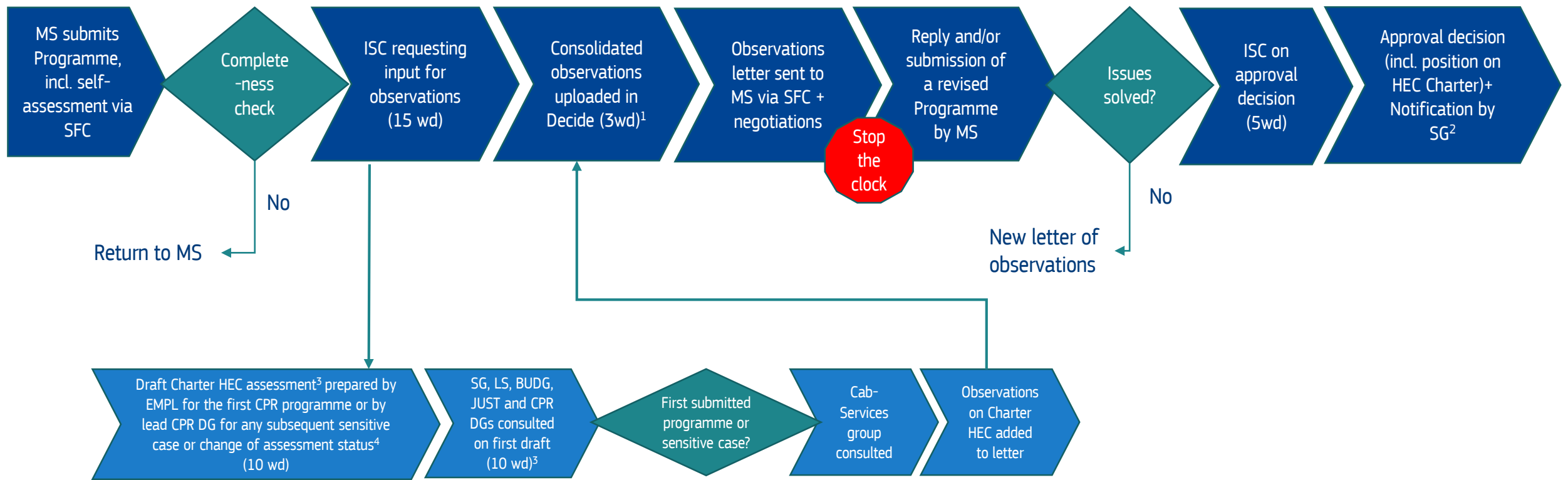


HEC Charter Assessment process for Programmes of Common Provisions Regulation funds

To be completed within 5 months of submission – clock stops running when observations are sent



¹ In specific cases and at the request of LS, this period can be prolonged to 5 working days in parallel with consultation of CABs.

² MS can submit payment requests even if not all HEC are fulfilled. The Commission only pays for expenditure linked to operations for which the enabling conditions are fulfilled, with the exception of those operations which contribute to the fulfilment (cf. art. 15 (5) CPR). Any payment claim submitted distinguishes between a) expenditure on operations for which enabling conditions are fulfilled; b) expenditure linked to unfulfilled enabling conditions and c) expenditure related to operations contributing to the fulfilment of unfulfilled conditions. This allows the geographical desk processing the payment request to determine the amount to be paid. (a+c).

³ The parallel consultation will be done via E-mail in which EMPL or lead CPR DG will also flag their proposal for sensitive cases to be referred to CAB-services WG.

⁴ This includes cases where the assessment of the HEC Charter would go from compliant to non-compliant, or where a new aspect of non-compliance arises.

Payment process linked to HEC Charter

Case 1 – HEC remain unfulfilled or no new assessment is provided by MS

MS submits payment request: expenditure linked to an unfulfilled enabling condition (based on COM decision) can be included but needs to be identified

Lead CPR geographical unit checks payment claim and confirm the amount to be paid (expenditure linked to specific objectives impacted by an unfulfilled enabling condition is not reimbursed, except if it contributed to the fulfilment of the enabling condition)

COM reimburses MS

Case 2 - MS submits new information on the fulfilment of HEC Charter during implementation in SFC

Lead DG prepares a draft assessment (10 wd)

ISC on the draft assessment (all CPR DGs, JUST, SG, BUDG, LS) (10 wd)

Lead DG consolidates ISC replies

Cab-Services group consulted (all cases are considered 'sensitive' at this stage)

Consolidated assessment published in Decide (3wd)

COM sends assessment to MS

Exception: when the same assessment is resubmitted for several programmes with identical COM assessment – no need to reconsult WG

MS have 1 month to reply

If not fulfilled, COM will not reimburse the expenditure concerned (as of the time of COM decision)
Exception: if expenditure contributes to the fulfilment of the enabling condition