



Rhodia Acetow
Dedicated. Agile.
Innovative.

THE ACETOW STORY

First
production
of flakes in
France

1912

Start-up of
flakes in
Germany

1927

Start-up of
flakes in
Brazil

1937

First
production
of filter tow
in Germany

1956

First
production
of filter tow
in Brazil

1962

Start-up
of filter
tow in
Russia

1997

Innovation and
diversification

2004 - today

Blackstone
acquires
Acetow

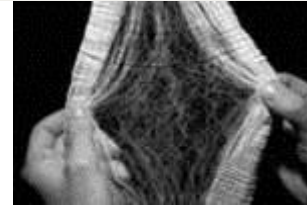
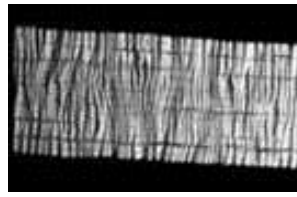
2017



Day 1, 1st of June 2017



Cellulose Acetate Flakes



Cellulose Acetate Fibers: Filter Tow



North America



1 production site,
capacity 45 kt
Flakes



Latin America



1 production site,
capacity 18 kt Tow



Europe & CIS



3 production sites,
capacity 89 kt Tow
& 75 kt Flakes



1 R&D center



Asia-Pacific

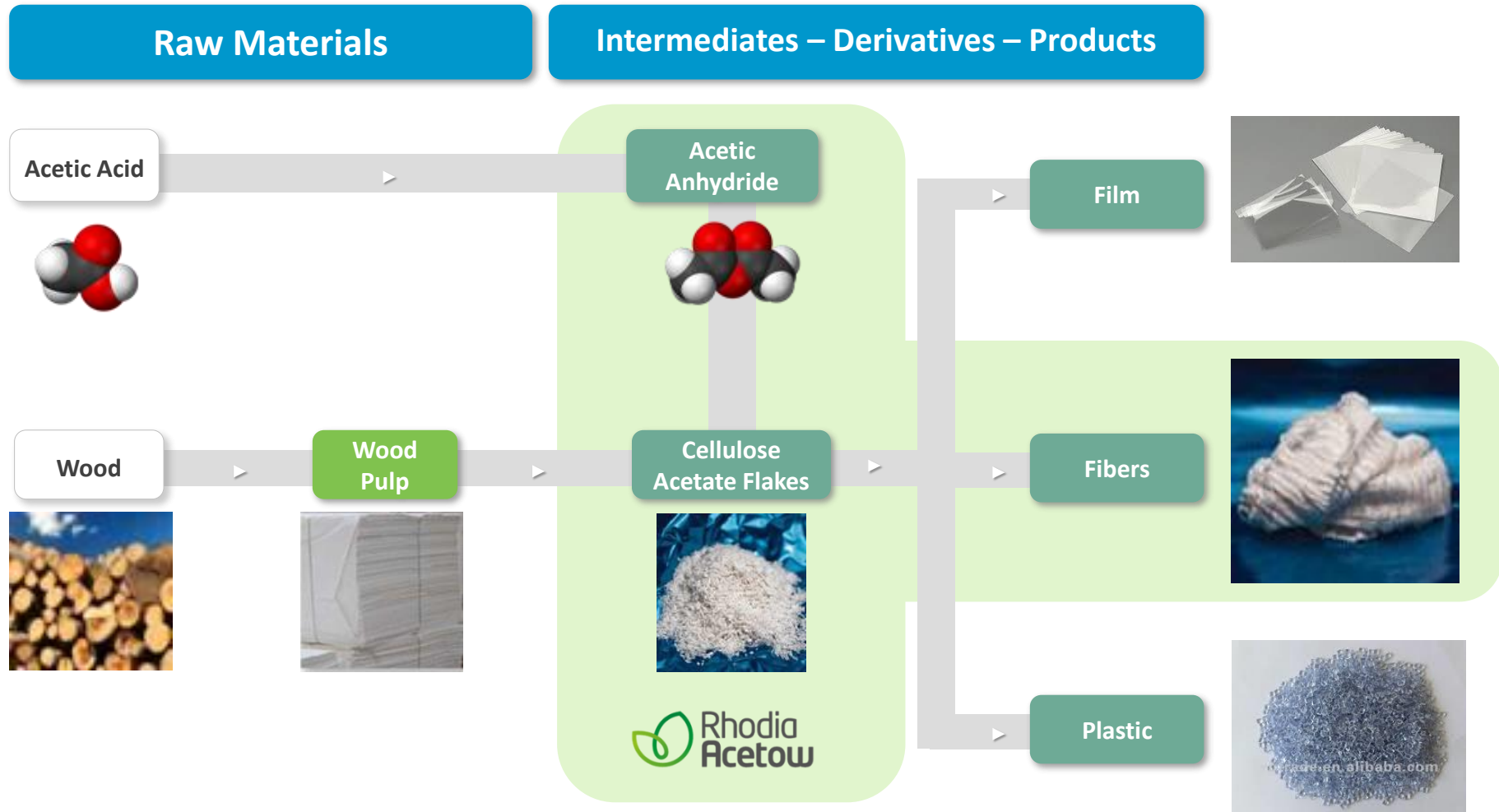


2 commercial
offices



2 warehouses

Cellulose Acetate: a 100 years bio-based polymer for fibers, film, plastic ... products



RHODIA ACETOW AT A GLANCE



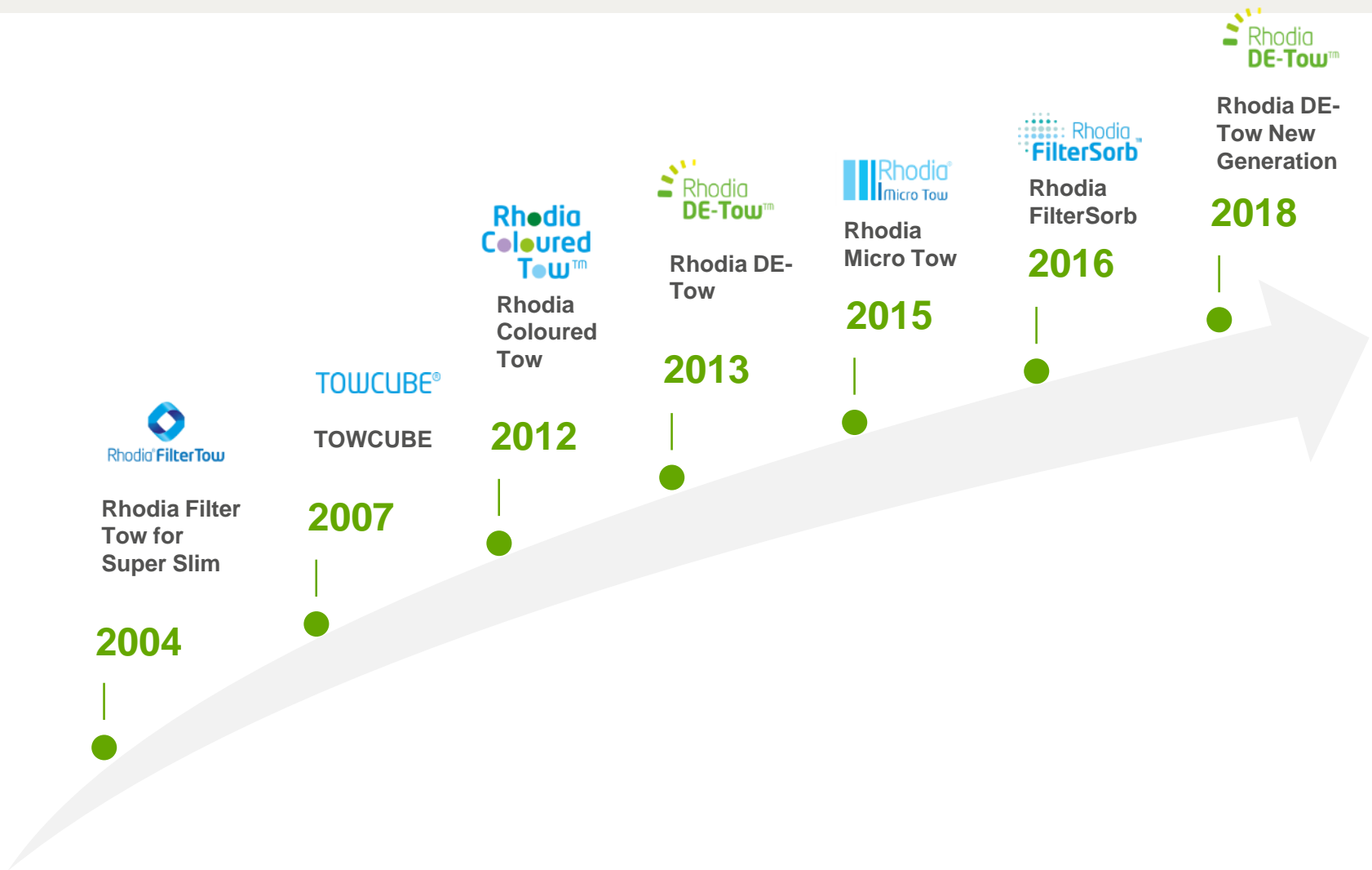
~ 1300
Employees

20 %
Market share of Filter Tow
worldwide

5
Industrial sites
worldwide

N° 2 in Europe
N° 1 in C.I.S.
N° 1 in Latin America

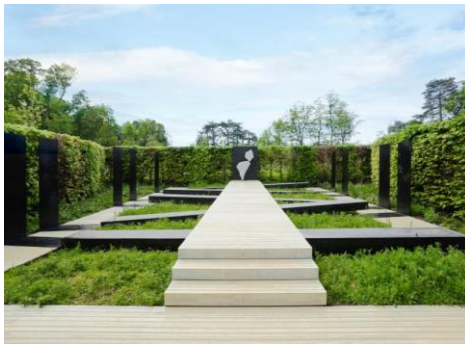
RHODIA ACETOW – AN INNOVATIVE COMPANY



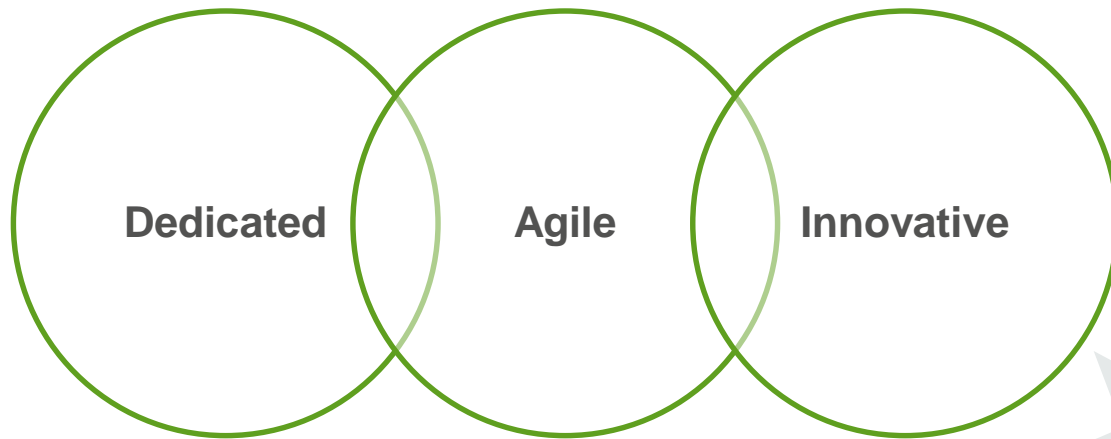
ACCOYA: WOOD WITHOUT COMPROMISE



- Dimensionally stable
- Outstanding durability
- Excellent machinability



- Consistent quality throughout
- Produced from sustainable sources, certified FSC®, PEFC™
- The manufacturing process is non-toxic and adds nothing to the wood



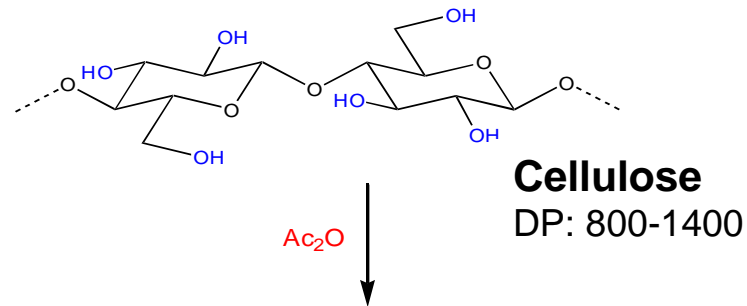
**Rhodia
Acetow**



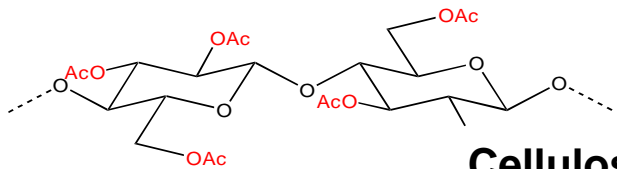
www.rhodia-acetow.com



Cellulose Acetate: a more than 100 years old bio-based polymer



Ac_2O

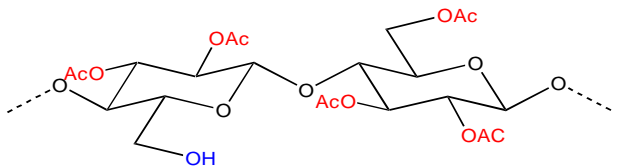


Cellulose Tri-Acetate (CTA)

DP: 240-320

DS: > 2.85

H_2O

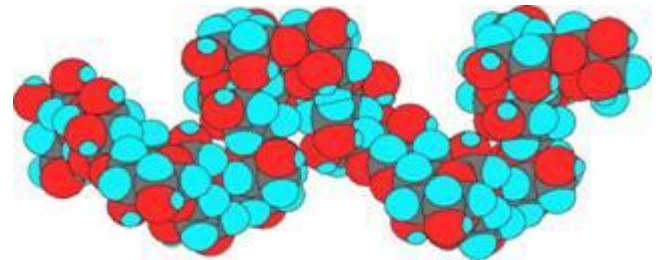
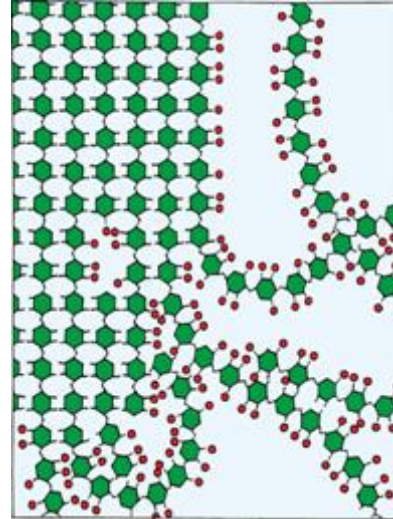


Cellulose Acetate

Cellulose Di-Acetate (CDA or CA)

DP: 210-260

DS: 2.5



Cellulose Acetate: today, more than 80% for Filter Tow

