



**COUNCIL OF
THE EUROPEAN UNION**

Brussels, 16 December 2002

14898/1/02

REV 1

LIMITE

CIVCOM 147

PESC 526

COSDP 411

RELEX 252

JAI 277

PROCIV 113

NOTE

From : Presidency

To : Delegations

Subject : CMCO Action Plan - Draft flowchart

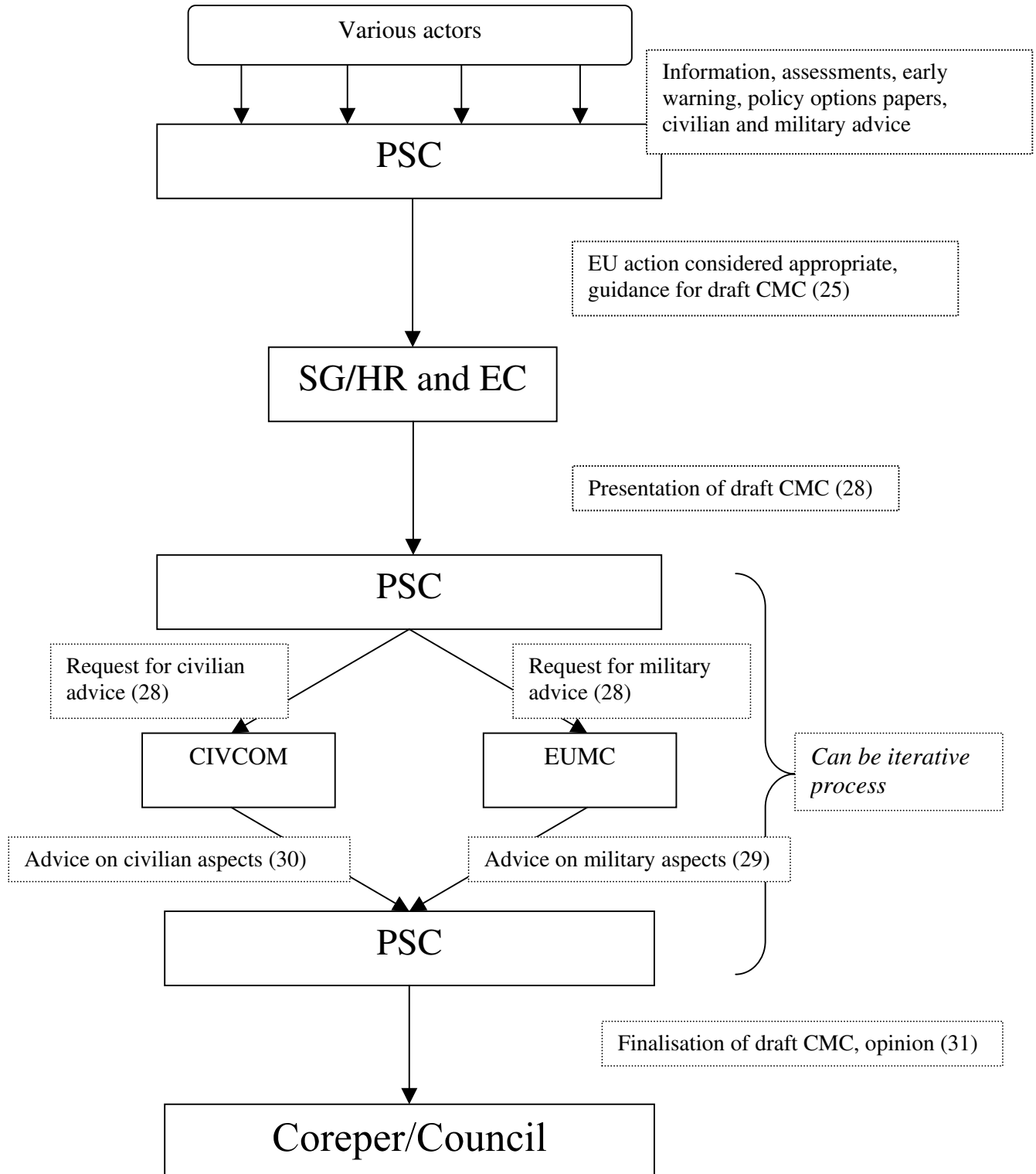
As a follow-up to the Action Plan for the further strengthening of civil-military co-ordination in EU crisis management (doc. 13480/1/02 REV 1, chapter B), delegations will find attached a draft flowchart designed to reflect the key decision making steps in the Crisis Management Procedures in the form presently under discussion within the Politico-Military Group. The draft flowchart is foreseen to be a part of the revised Crisis Management Procedures.

Notes:

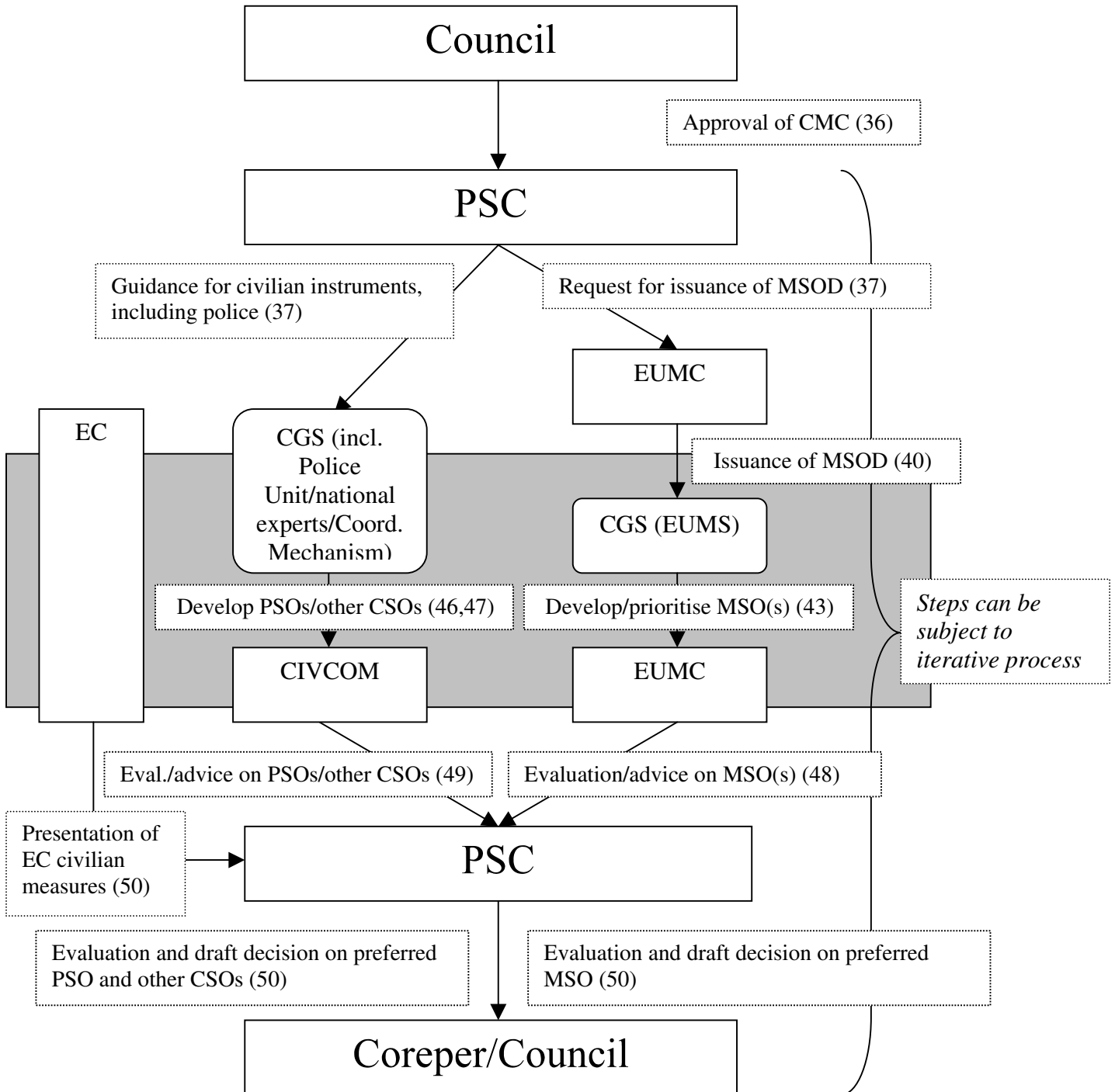
- The flowchart is intended to be a tool to facilitate understanding and use of the present Crisis Management Procedures (CMP) by reflecting the key decision instances contained therein. It focuses on the internal EU decision-making process and in particular on key moments (i.e. either decisions or presentation of ‘products’) leading up to the approval of OPLANs and equivalent documents and the operation launch by Council (end of Phase 4).
- Other elements of the CMP may not be reflected in the present flowchart but clearly remain integral to crisis management. These include activities that are ongoing throughout the procedures, including for example assessments by the Policy Unit and the Joint SITCEN, information strategy activities, or regular information exchanges. Consultations or interactions with third parties, which take place at points in the procedures that can vary depending on the particular crisis, are not reflected.
- The processes within the CMP (and indicated in the flowchart) are indicative; not all will necessarily be taken during a particular crisis (e.g. an operation may include exclusively military or exclusively civilian instruments). Many of the processes included in the CMP, such as the development of a crisis management concept (CMC), are iterative in nature.
- It is understood that there is input to Council bodies and decision-making procedures from Council Secretariat and Commission services throughout the procedures and at all levels. Co-ordination between services is also an ongoing process. The grey backgrounds in the flowchart indicate stages at which there is a heightened co-ordination, i.e. to ensure the coherence of planning products.
- The arrows in the flowchart reflect a tasking or the forwarding of a ‘product’ and are not intended to reflect hierarchical relationships.
- The flowchart is based on the “Suggestions for procedures for coherent, comprehensive EU crisis management” (CMP) presently under discussion within the Politico-Military Group. Further revisions to the CMP will be taken into account.

Phase 1 - Routine Phase

Phase 2 - Crisis Build-up / Elaboration of the draft CMC



Phase 3 - Approval of the CMC



Phase 4 - Formal decision to take action

