

Planning Statistics 2003



Printed on recycled paper containing a
minimum of 75% post-consumer waste



AN ROINN COMHSHAOIL, OIDHREACHTA AGUS RIALTAIS ÁITIÚIL
DEPARTMENT OF THE ENVIRONMENT, HERITAGE
AND LOCAL GOVERNMENT

Contents

<i>List of Tables</i>	<i>(ii)</i>
<i>Introduction</i>	<i>1</i>
<i>I Planning Applications</i>	<i>3</i>
<i>II Enforcement</i>	<i>23</i>
<i>III Fees and Administration</i>	<i>29</i>
<i>IV Other</i>	<i>36</i>
<i>Appendix A Planning Fee Classes of Development</i>	<i>43</i>
<i>Appendix B Enactments and Regulations Relating to Physical Planning</i>	<i>44</i>
<i>Appendix C Other Publications</i>	<i>46</i>
<i>Appendix D Miscellaneous Sections of the 1963 and 2000 Planning Acts</i>	<i>47</i>



List of Tables

Page

I PLANNING APPLICATIONS

1	Planning applications, decisions and refusals	3
2	Planning applications by area	4
3	Planning decisions by area	5
4	Refusals and refusal rate by area	6
4A	Table 4(a) Decisions under Section 34(10)(b) where decision differs from reports of planners	7
5	Planning decisions and appeals	8
6	Planning decisions and appeals in 2003 by area	8
7	Appeals made by area	9
8	Consistency of planning decisions in appeal cases	10
9	Planning applications by type of application	10
10	Planning applications by area and by type in 2003	11
11	Planning decisions by type of application	12
12	Refusals as percentage of decisions by type of application	12
13	Applications deferred by type of application	13
14	Applications deferred as percentage of planning applications	14
15	Applications where consideration time has been extended	15
16	Applications where S140 procedures were followed	16
16A	Applications where S140 procedures were followed by county	17
17	Applications where the Material Contravention procedures were used	18
17A	Applications where the Material Contravention procedures were used by County	18
18	Planning applications by class of development 1998-2003	19
19	Planning applications by area and class of development in 2003	20
20	Development contributions	22
21	Development contributions by area	22

II ENFORCEMENT

22	Enforcement cases initiated, by procedure	24
23	Enforcement cases convicted, by procedure	24
24	Enforcement notices and cases initiated and convicted in 2003 under the 1963 and 1976 Acts	25
25	Enforcement Cases by Area and Procedure under the Planning and Development Act for 2003	26
26	Applications for Injunction Order to High Court	28
27	Applications for Injunction Order to Circuit Court	28

III FEES AND ADMINISTRATION

28	Total amount received in application fees by class of development 2003	29
29	Amount received in application fees by class of development 2000-2003	29
30	Amount received in application fees by area and class of development	30
31	Fees received, other than application fees by area and by type of fee	32
32	Total amount received in fees by type of fee	33
33	Staff	34
34	Staff by area	35

IV OTHER

35	Claims for compensation	36
36	Agreements under S47 of the 2000 Planning Act by area	37
37	Tree Preservation Orders, by area	38
38	Extension of duration of permission for substantially completed development	39
39	S254 Licence applications	40
40	Use of miscellaneous Sections of the 2000 Planning Act	41

Introduction

The publication series Planning Statistics was established in 1986. Its main objective is to monitor the implementation of the Local Government (Planning and Development) Acts 1963 – 1999 and the Planning and Development Acts 2000 – 2002. Most of the statistics relate to development control procedures (planning applications, appeals, fees, enforcement, etc.) and provide an up-to-date picture of the current situation as well as the trends emerging in relation to the operation of the physical planning system as a whole.

The current edition takes 1998 as its starting point and refers the reader to earlier editions for information prior to that date. Table 1, which gives overall trends from 1992 to date, has been retained.

The Planning Statistics Quarterly has been available since the beginning of 1990. It provides a breakdown of basic information on planning applications, decisions, refusals and deferrals by individual authority. Since 1990, information (in particular, Tables 2 and 3) is presented in the Annual Statistics by Area, an Area being a county authority and all other authorities within that county but excluding Borough Councils.

Most of the figures presented here are based on information submitted by planning authorities either quarterly or annually to the Department of the Environment, Heritage and Local Government. The accuracy of the figures is dependent on the accuracy of the data submitted by each planning authority.

In calculating 'number of permissions', 'number of refusals', 'number of enforcement cases' and 'number of convictions' it should be borne in mind that the total number of refusals for one year could refer to applications from the previous year; similarly a period of more than one year could elapse between the initiation of an enforcement order and a possible conviction.

The tables have been grouped in four sections. The first two sections, 'Planning Applications' and 'Enforcement' deal with the development control system. The third section, 'Fees and Administration', covers the administrative aspects of the planning system, including staffing and resources, while the final section provides statistics on the use of various procedures in the Planning Acts.

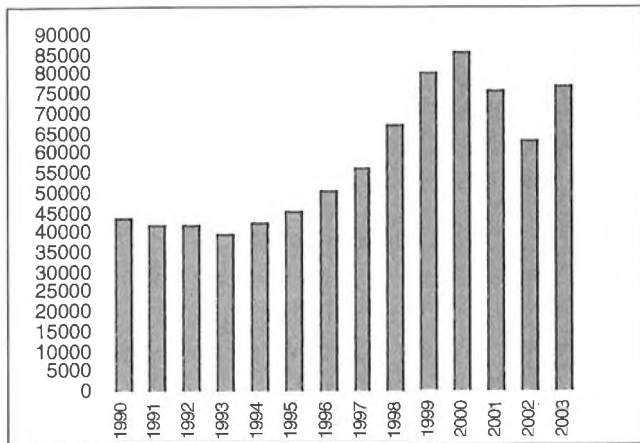
A short section of text precedes each table or set of tables. Deficiencies in the statistics that may affect the validity or interpretation are pointed out in these paragraphs. In addition, some interpretation of the data is provided where relevant. However, the main purpose of this publication is to provide a set of basic planning statistics.

Planning and Development Act 2000

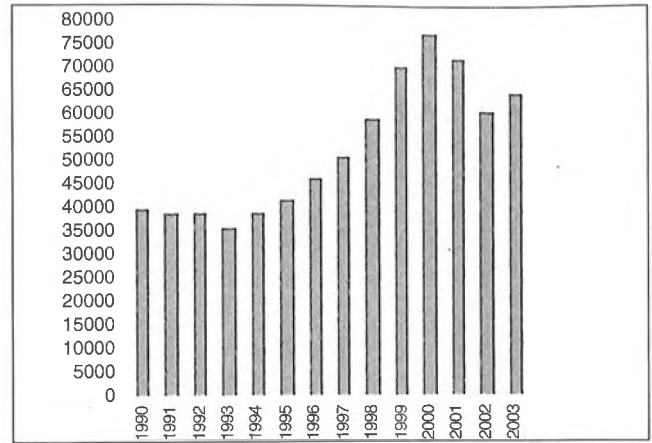
In August 2000, the Planning and Development Act, 2000 was enacted following detailed consideration of its provisions by the Oireachtas. This Act, which revises, extends and consolidates the legislative basis for the Irish planning system, introduced many significant changes and initiatives designed to introduce a sustainable development ethos into the Irish planning system, increase the efficiency of the system and ensure a strategic approach to land-use planning in Ireland.

The Act was brought into force in stages. Some priority provisions commenced by the end of 2000 including those on the supply of housing, on strategic development zones and on the transfer of the Minister's statutory functions to An Bord Pleanála. By 11 March, 2002 all parts of the Planning and Development Act, 2000 commenced.

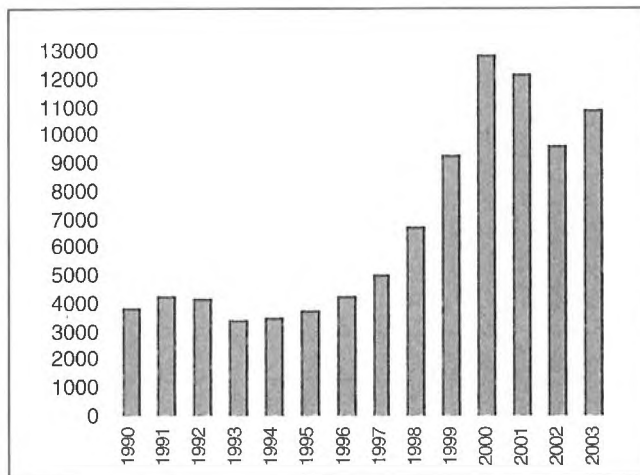
Figure 1: Planning Applications, Decisions, Refusals & Appeals



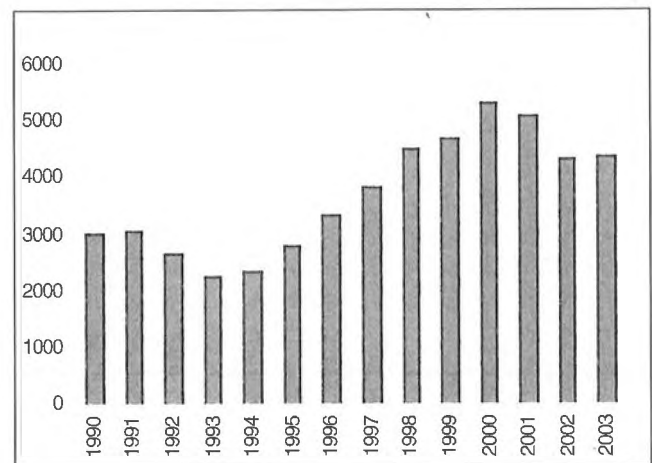
APPLICATIONS



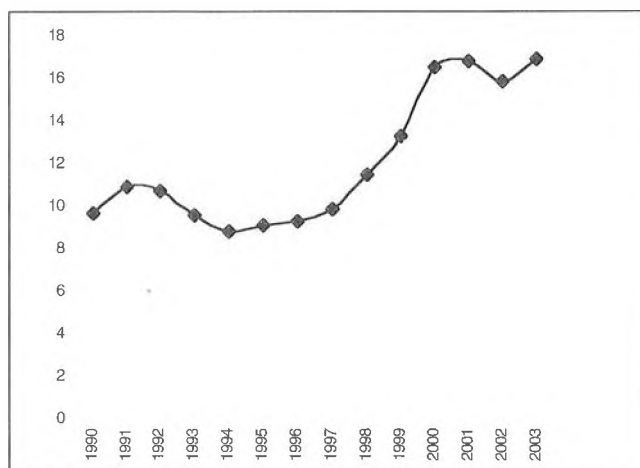
DECISIONS



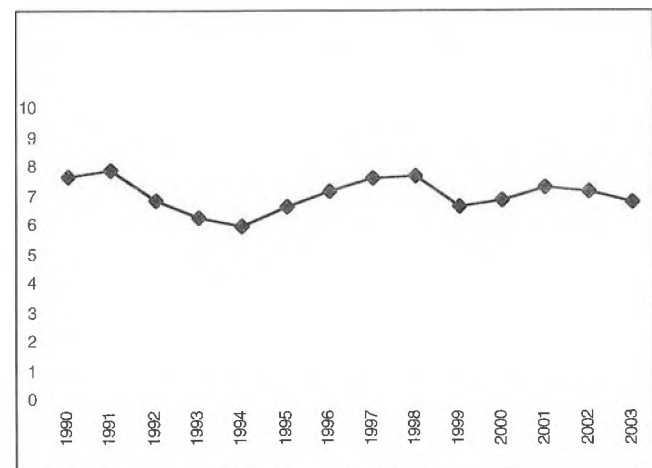
REFUSALS



APPEALS



REFUSAL RATE
(refusals as % of decisions)



APPEAL RATE
(appeals as % of decisions)

I Planning Applications

Tables 1, 2, 3 and 4

In the ten year period from 1992 to 2002 the number of planning applications made to local authorities increased by approximately 51%. The number of planning applications in 2003 was 76,546 which represented an increase of 22% compared with 2002.

In the 1980s and early 1990s up to 1993 the applications for planning permission fluctuated between thirty three thousand and just over forty thousand. Between 1994 and 2000 there was a constant rise in the figures giving a cumulative increase of over 100% in the seven year period.

Table 4 gives the number of refusals and the 'refusal rates'. The percentage of planning decisions that consist of a refusal (the refusal rate) had shown a consistent decline from 15.1% in 1981 to 7.4 % in 1986. Between 1987 and 1997, apart from 1988, the rate fluctuated between 8 % and 11%. The rate for 2001 was 16.9% and fell to 15.9 % in 2002. The refusal rate for 2003 increased to 16.9%.

The refusal rate is not an indicator of the proportion of applications that end up as refusals, nor should it be regarded as an indicator of the 'efficiency' or 'commitment' of any individual planning authority. Higher refusal rates might be expected, for example, in areas of high amenity value or in areas under intensive pressures for speculative development.

Table 4(a) gives the number of decisions taken by planning authorities where the planning authority decision differs from reports of the planning inspector.

Some of the above trends are graphically presented in Figure 1.

Table 1: Planning Applications, Decisions and Refusals

Year	Planning applications	Planning decisions	Refusals	Refusal rate ¹
1992	41 711	38 785	4 197	10.8
1993	39 486	35 539	3 428	9.6
1994	42 318	38 849	3 456	8.9
1995	45 261	41 282	3 773	9.1
1996	50 732	46 015	4 278	9.3
1997	55 929	50 427	5 008	9.9
1998	67 075	58 634	6 730	11.5
1999	80 261	69 869	9 274	13.3
2000	85 300	77 295	12 810	16.6
2001	75 786	71 890	12 128	16.9
2002	62 810	60 376	9 577	15.9
2003	76 546	64 458	10 893	16.9

¹ Number of decisions to refuse permission as a percentage of the total number of decisions

Table 2: Planning Applications by area

Area	2001	2002	2003	EIS¹	(%) Change 02 to 03
Carlow	912	690	932	3	35.1
Cavan	1 835	1 573	2 076	5	32.0
Clare	2 449	2 536	3 030	13	19.5
Cork	8 152	5 806	7 102	23	22.3
Donegal	4 744	4 658	5 384	8	15.6
Dun Laoghaire/Rathdown	1 965	1 498	1 742	10	16.3
Fingal	2 201	1 900	2 020	11	6.3
Galway	5 549	5 241	7 221	5	37.8
Kerry	4 473	3 657	4 373	16	19.6
Kildare	2 548	1 900	1 951	12	2.7
Kilkenny	1 875	1 449	1 756	10	21.2
Laois	1 083	928	1 197	2	29.0
Leitrim	1 009	703	946	3	34.6
Limerick	2 629	1 980	2 286	6	15.5
Longford	955	650	782	2	20.3
Louth	1 864	1 618	1 905	3	17.7
Mayo	3 296	2 729	3 814	10	39.8
Meath	2 521	1 983	2 492	14	25.7
Monaghan	1 326	1 172	1 254	7	7.0
North Tipperary	1 505	1 490	1 677	6	12.6
Offaly	1 374	1 229	1 272	6	3.5
Roscommon	1 772	1 366	1 713	2	25.4
Sligo	1 257	1 003	1 259	6	25.5
South Dublin	1 485	1 094	1 568	14	43.3
South Tipperary	1 558	1 409	1 504	1	6.7
Waterford	1 551	1 275	1 525	2	19.6
Westmeath	1 467	1 121	1 255	5	12.0
Wexford	4 021	3 275	3 656	3	11.6
Wicklow	2 007	1 607	2 028	5	26.2
Sub-total	69 383	57 540	69 720	213	21.2
Cork City Council	928	805	964	1	19.8
Dublin City Council	3 864	3 108	4 480	16	44.1
Galway City Council	774	672	579	0	-13.8
Limerick City Council	422	334	338	1	1.2
Waterford City Council	415	351	465	2	32.5
Sub-Total	6 403	5 270	6 826	20	29.5
Total	75 786	62 810	76 546	233	21.9

¹ Number of Planning Applications accompanied by an Environmental Impact Statement in 2003

Table 3: Planning Decisions by Area

Area	2001	2002	2003	(%) Change '02 to '03
Carlow	922	716	860	20.1
Cavan	2 054	1 639	1 702	3.8
Clare	2 352	2 000	1 995	-0.3
Cork	7 075	6 041	6 256	3.6
Donegal	4 371	4 431	4 714	6.4
Dun Laoghaire	1 963	1 561	1 764	13.0
Fingal	2 124	1 805	1 799	-0.3
Galway	4 844	3 372	5 591	65.8
Kerry	4 667	3 860	3 726	-3.5
Kildare	2 257	1 946	2 054	5.5
Kilkenny	1 771	1 456	1 535	5.4
Laois	950	940	1 079	14.8
Leitrim	939	742	756	1.9
Limerick	2 493	2 092	2 050	-2.0
Longford	853	686	659	-3.9
Louth	2 169	1 874	1 679	-10.4
Mayo	3 260	2 604	2 918	12.1
Meath	2 622	2 120	2 106	-0.7
Monaghan	1 297	1 182	1 155	-2.3
North Tipperary	1 310	1 208	1 258	4.1
Offaly	1 343	1 207	1 110	-8.0
Roscommon	1 564	1 438	1 288	-10.4
Sligo	1 076	1 141	1 090	-4.5
South Dublin	1 442	1 097	1 337	21.9
South Tipperary	1 445	1 233	1 296	5.1
Waterford	1 480	1 323	1 301	-1.7
Westmeath	1 523	1 147	1 042	-9.2
Wexford	3 897	3 086	3 334	8.0
Wicklow	1 718	1 347	1 442	7.1
Sub-total	65 781	55 294	58 896	6.5
Cork City Council	859	783	910	16.2
Dublin City Council	3 658	2 989	3 276	9.6
Galway City Council	755	634	602	-5.0
Limerick City Council	414	334	364	9.0
Waterford City Council	423	342	410	19.9
Sub-total	6 109	5 082	5 562	9.4
Total	71 890	60 376	64 458	6.8

Table 4: Refusals and Refusal Rate by Area

Area	2002			2003			Rate Change from '02 to '03
	Refusals	Decisions	Rate	Refusals	Decisions	Rate	
Carlow	86	716	12.0	85	860	9.9	-2.1
Cavan	152	1 639	9.3	175	1 702	10.3	1.0
Clare	370	2 000	18.5	286	1 995	14.3	-4.2
Cork	1 065	6 041	17.6	1 172	6 256	18.7	1.1
Donegal	652	4 431	14.7	761	4 714	16.1	1.4
Dun Laoghaire	246	1 561	15.8	208	1 764	11.8	-4.0
Fingal	396	1 805	21.9	505	1 799	28.1	6.1
Galway	441	3 372	13.1	1 238	5 591	22.1	9.1
Kerry	690	3 860	17.9	664	3 726	17.8	-0.1
Kildare	361	1 946	18.6	555	2 054	27.0	8.5
Kilkenny	262	1 456	18.0	279	1 535	18.2	0.2
Laois	134	940	14.3	102	1 079	9.5	-4.8
Leitrim	100	742	13.5	87	756	11.5	-2.0
Limerick	277	2 092	13.2	232	2 050	11.3	-1.9
Longford	81	686	11.8	96	659	14.6	2.8
Louth	393	1 874	21.0	391	1 679	23.3	2.3
Mayo	338	2 604	13.0	304	2 918	10.4	-2.6
Meath	489	2 120	23.1	509	2 106	24.2	1.1
Monaghan	169	1 182	14.3	65	1 155	5.6	-8.7
North Tipperary	109	1 208	9.0	95	1 258	7.6	-1.5
Offaly	258	1 207	21.4	258	1 110	23.2	1.9
Roscommon	60	1 438	4.2	76	1 288	5.9	1.7
Sligo	217	1 141	19.0	125	1 090	11.5	-7.6
South Dublin	185	1 097	16.9	254	1 337	19.0	2.1
South Tipperary	158	1 233	12.8	198	1 296	15.3	2.5
Waterford	146	1 323	11.0	162	1 301	12.5	1.4
Westmeath	213	1 147	18.6	185	1 042	17.8	-0.8
Wexford	667	3 086	21.6	763	3 334	22.9	1.3
Wicklow	256	1 347	19.0	273	1 442	18.9	-0.1
Sub-total	8 971	55 294	16.2	10 103	58 896	17.2	0.9
Cork City Council	88	783	11.2	158	910	17.4	6.1
Dublin City Council	393	2 989	13.1	426	3 276	13.0	-0.1
Galway City Council	83	634	13.1	87	602	14.5	1.4
Limerick City Council	14	334	4.2	39	364	10.7	6.5
Waterford City Council	28	342	8.2	80	410	19.5	11.3
Sub-total	606	5 082	11.9	790	5 562	14.2	2.3
Total	9 577	60 376	15.9	10 893	64 458	16.9	1.0

Table 4(a)

Decisions under Section 34(10)(b), where decision differs from reports of planners

Area	Class 1	Class 2	Class 3	Class 4	Class 5	Class 6	Class 7	Class 8	Class 9	Class 10	Class 11	Class 12	Class 13
Carlow	0	0	0	0	0	0	0	0	0	0	0	0	0
Cavan	1	0	0	0	0	0	0	0	0	0	0	0	0
Clare	0	0	0	0	0	0	0	0	0	0	0	0	0
Cork	89	7	3	7	0	1	0	0	1	0	1	0	2
Donegal	3	1	0	0	0	0	0	0	0	0	0	0	0
Dun Laoghaire- Rathdown	0	0	0	1	0	0	0	0	0	0	0	0	0
Fingal	5	6	0	0	0	0	0	0	0	0	0	0	0
Galway	5	0	0	1	0	0	0	0	0	0	0	0	0
Kerry	1	0	0	0	0	0	0	0	0	0	0	0	1
Kildare	32	0	0	1	0	0	0	0	0	0	0	0	0
Kilkenny	0	0	0	0	0	0	0	0	0	0	0	0	0
Laois	0	0	0	0	0	0	0	0	0	0	0	0	0
Leitrim	4	0	0	0	0	0	0	0	0	0	0	0	0
Limerick	1	0	0	0	0	0	0	0	0	0	0	0	0
Longford	5	0	0	1	0	0	0	0	0	0	0	0	0
Louth	0	0	0	0	0	0	0	0	0	0	0	0	0
Mayo	6	0	0	0	0	0	0	0	0	0	0	0	0
Meath	10	0	0	0	0	0	0	0	0	0	0	0	0
Monaghan	0	0	0	0	0	0	0	0	0	0	0	0	0
North Tipperary	1	1	0	0	0	0	0	0	0	0	0	0	0
Offaly	0	0	0	0	0	0	0	0	0	0	0	0	0
Roscommon	1	0	0	1	0	0	0	0	0	0	0	0	0
Sligo	0	0	0	0	0	0	0	0	0	0	0	0	0
South Dublin	0	0	0	0	0	0	0	0	0	0	0	0	0
South Tipperary	0	0	0	0	0	0	0	0	0	0	0	0	0
Waterford	0	0	0	0	0	0	0	0	0	0	0	0	0
Westmeath	45	3	0	5	0	0	0	0	0	0	0	0	1
Wexford	15	0	0	0	0	0	0	0	0	0	0	0	0
Wicklow	5	0	0	0	0	0	0	0	0	0	0	0	0
Subtotal	229	18	3	17	0	1	0	0	1	0	1	0	4
Cork	2	4	0	0	0	0	0	0	0	0	0	0	0
Dublin	0	0	0	0	0	0	0	0	0	0	0	0	0
Galway	1	0	0	0	0	0	0	0	0	0	0	0	0
Limerick	0	0	0	0	0	0	0	0	0	0	0	0	0
Waterford	0	0	0	0	0	0	0	0	0	0	0	0	0
Sub-total	3	4	0	0	0	0	0	0	0	0	0	0	0
TOTAL	232	22	3	17	0	1	0	0	1	0	1	0	4

Tables 5, 6, 7 and 8

In 2003, 4,370 planning decisions were the subject of an appeal to An Bord Pleanála - an increase of 1% over the previous year. The figure does not include reactivated appeals. A substantial number of appeals - approximately 30% of the total - were disposed of without a formal decision (withdrawn, invalid, etc.). In 2003 the number of formal decisions amounted to 3074.

Table 8 (which is obtained in full from the annual report of An Bord Pleanála) shows the breakdown of appeal decisions in three categories: reversed, varied and confirmed. Slightly less than one in three appeals leads to a reversal of the local authority decision. This information is not available for individual authorities.

Table 5: Planning Decisions and Appeals

Year	Planning decisions	Appeals made	Appeal decisions	Appeals made as percentage of planning decisions
1992	38 785	2 671	2 473	6.9
1993	35 539	2 249	2 033	6.3
1994	38 849	2 331	1 802	6.0
1995	41 282	2 777	2 064	6.7
1996	46 015	3 319	2 540	7.2
1997	50 427	3 845	2 902	7.6
1998	58 634	4 533	3 154	7.7
1999	69 869	4 706	3 697	6.7
2000	77 320	5 306	3 801	6.9
2001	71 890	5 219	3 829	7.3
2002	60 376	4 324	4 276	7.2
2003	64 458	4 370	3 074	6.8

Source - An Bord Pleanála

Table 6: Planning Decisions and Appeals in 2003 by Area

Area	Planning Decisions	Appeals Made	Appeals made as % of Planning Decisions
Carlow	860	52	6.0
Cavan	1702	62	3.6
Clare	1995	117	5.9
Cork	6256	342	5.5
Donegal	4714	148	3.1
Dun Laoghaire	1764	336	19.0
Fingal	1799	291	16.2
Galway	5591	209	3.7
Kerry	3726	199	5.3
Kildare	2054	262	12.8
Kilkenny	1535	65	4.2
Laois	1079	39	3.6
Leitrim	756	39	5.2
Limerick	2050	83	4.0
Longford	659	40	6.1
Louth	1679	100	6.0
Mayo	2918	151	5.2
Meath	2106	147	7.0
Monaghan	1155	19	1.6
North Tipperary	1258	62	4.9
Offaly	1110	50	4.5
Roscommon	1288	43	3.3
Sligo	1090	67	6.1
South Dublin	1337	193	14.4
South Tipperary	1296	65	5.0
Waterford	1301	74	5.7
Westmeath	1042	62	6.0
Wexford	3334	106	3.2
Wicklow	1442	162	11.2
Sub-total	58896	3585	6.1
Cork	910	126	13.8
Dublin	3276	514	15.7
Galway	602	77	12.8
Limerick	364	41	11.3
Waterford	410	27	6.6
Sub-total	5 562	785	14.1
Total	64 458	4 370	6.8

Table 7: Appeals Made by Area¹

Area	1998	1999	2000	2001	2002	2003
Carlow	38	49	59	49	41	52
Cavan	54	50	72	85	77	62
Clare	105	107	176	156	150	117
Cork	387	431	510	508	344	342
Donegal	124	203	177	169	170	148
Dun Laoghaire/Rathdown	309	334	376	377	296	336
Fingal	281	296	318	317	259	291
Galway	224	197	191	185	154	209
Kerry	179	188	230	228	194	199
Kildare	144	158	176	205	226	262
Kilkenny	79	85	98	99	76	65
Laois	50	80	84	63	45	39
Leitrim	31	35	33	40	52	39
Limerick	96	123	132	96	111	83
Longford	34	27	55	34	43	40
Louth	106	103	142	126	125	100
Mayo	161	162	175	134	177	151
Meath	156	135	136	186	132	147
Monaghan	44	36	58	54	44	19
North Tipperary	81	106	77	75	50	62
Offaly	51	65	86	84	60	50
Roscommon	53	56	63	99	74	43
Sligo	42	54	51	70	63	67
South Dublin	191	190	214	192	167	193
Tipperary SR	53	63	81	110	79	65
Waterford	65	47	92	99	78	74
Westmeath	71	65	84	72	74	62
Wexford	116	135	136	163	114	106
Wicklow	226	218	228	222	171	162
Sub-total	3 551	3 798	4 310	4 297	3 646	3 585
Cork	118	93	128	109	94	126
Dublin	662	618	654	662	445	514
Galway	139	128	129	96	70	77
Limerick	31	40	43	24	35	41
Waterford	32	29	42	31	34	27
Sub-total	982	908	996	922	678	785
Total	4 533	4 706	5 306	5 219	4 324	4 370

¹Source: An Bord Pleanála

Table 8: Consistency of Planning Decisions in Appeal Cases (S37 of 2000 Act)

Decision of Planning Authority			
Year	Reversed	Varied	Confirmed
	%	%	%
1992	598 (24.2)	676 (27.3)	1 199 (48.5)
1993	496 (24.4)	675 (33.2)	862 (42.4)
1994	418 (23.2)	652 (36.2)	732 (40.6)
1995	478 (23.2)	746 (36.1)	840 (40.7)
1996	582 (22.9)	915 (38.0)	1 043 (41.1)
1997	659 (22.9)	992 (34.5)	1 222 (42.5)
1998	664 (21.5)	1 143 (37.1)	1 276 (41.4)
1999	895 (24.6)	1 212 (33.3)	1 530 (42.1)
2000	1 010 (27.1)	1 170 (31.4)	1 546 (41.5)
2001	1 123 (29.3)	1 158 (30.3)	1 547 (40.4)
2002	1 395 (32.6)	1 434 (33.5)	1 447 (33.9)
2003	922 (30.0)	1 107 (36.0)	1 045 (34.0)

Source: An Bord Pleanála

Tables 9, 10, 11 and 12

Tables 9 and 10 show applications by type of application. Since 1998 applications for outline permission accounted for about one in eight of all applications. In the years 1999 and 2000 this figure increased to 15%, in 2001 it was almost 13% and decreased to 9% of during 2002. In 2003 the amount of outline applications fell to 8% of all applications. It should be noted that the use of outline applications is relatively frequent in some authorities while the average for the 5 City Councils is 1.2%. The ratio of applications for approval to those for outline permissions is approximately 1:2.

Table 12 shows that the 'refusal rate' for outline permissions - at approximately 38% - is more than twice the average rate. The refusal rate for approvals is approximately one quarter of the average rate. It should also be noted that while outline permissions deferred are 9% of all deferrals (Table 13), approximately 25% of all outline applications are deferred.

Table 9: Planning Applications by Type of Application

Type of Application				
Year	Outline Perm	Approval	Permission	Total
1998	8 068 (12.0)	1 932 (2.9)	57 075 (85.1)	67 075
1999	12 206 (15.2)	2 494 (3.1)	65 561 (81.7)	80 261
2000	13 690 (15.3)	3 179 (3.6)	72 431 (81.1)	89 300
2001	9 857 (12.7)	2 957 (3.8)	64 972 (83.5)	77 786
2002	5 590 (8.6)	2 829 (4.3)	56 854 (87.1)	65 273
2003	6 153 (7.8)	3 232 (4.1)	69 731 (88.1)	79 116

Table 10: Planning Applications by Area and by Type 2003

Area	Outline	%	Approval	%	Perm'sn	%	Total
Carlow	13	1.4	6	0.6	920	98.0	939
Cavan	115	5.4	57	2.7	1 943	91.9	2 115
Clare	215	7.7	226	8.1	2 335	84.1	2 776
Cork	821	11.5	188	2.6	6 109	85.8	7 118
Donegal	714	12.4	283	4.9	4 755	82.7	5 752
Dun Laoghaire	30	1.6	13	0.7	1 802	97.7	1 845
Fingal	47	2.0	25	1.1	2 239	96.9	2 311
Galway	1071	15.6	567	8.2	5 244	76.2	6 882
Kerry	704	15.4	427	9.3	3 443	75.3	4 574
Kildare	61	2.3	18	0.7	2 535	97.0	2 614
Kilkenny	69	3.9	62	3.5	1 636	92.6	1 767
Laois	108	8.9	28	2.3	1 073	88.8	1 209
Leitrim	76	8.2	51	5.5	801	86.3	928
Limerick	231	10.0	120	5.2	1 964	84.8	2 315
Longford	66	8.3	51	6.4	682	85.4	799
Louth	163	8.2	69	3.5	1 752	88.3	1 984
Mayo	213	5.8	120	3.3	3 331	90.9	3 664
Meath	61	1.8	10	0.3	3 269	97.9	3 340
Monaghan	161	10.7	30	2.0	1 316	87.3	1 507
North Tipperary	282	16.4	120	7.0	1 313	76.6	1 715
Offaly	57	4.6	74	6.0	1 098	89.3	1 229
Roscommon	172	10.0	126	7.4	1 414	82.6	1 712
Sligo	64	5.1	21	1.7	1 170	93.2	1 255
South Dublin	19	1.2	9	0.6	1 582	98.3	1 610
South Tipperary	105	6.8	119	7.7	1 319	85.5	1 543
Waterford	201	13.1	91	5.9	1 248	81.0	1 540
Westmeath	41	3.1	67	5.0	1 232	91.9	1 340
Wexford	143	3.8	226	6.1	3 364	90.1	3 733
Wicklow	44	2.3	7	0.4	1 876	97.4	1 927
Sub-total	6 067	8.4	3 211	4.5	62 765	87.1	72 043
Cork	16	1.7	0	0.0	948	98.3	964
Dublin	53	1.2	15	0.3	4 412	98.5	4 480
Galway	5	0.7	4	0.5	759	98.8	768
Limerick	3	0.8	1	0.3	354	98.9	358
Waterford	9	1.8	1	0.2	493	98.0	503
Sub-total	86	1.2	21	0.3	6966	98.5	7 073
Total	6 153	7.8	3 232	4.1	69 731	88.1	79 116

Table 11: Planning Decisions by Type of Application

Year	Outline		Type of Application		Permission		Total
	Permission	%	Approval	%	Permission	%	
1992	3 697	(9.5)	742	(1.9)	34 346	(88.6)	38 785
1993	3 299	(9.3)	681	(1.9)	31 559	(88.8)	35 539
1994	3 325	(8.6)	895	(2.3)	34 629	(89.1)	38 849
1995	3 539	(8.6)	942	(2.3)	36 801	(89.1)	41 282
1996	3 876	(8.4)	1 085	(2.4)	41 058	(89.2)	46 015
1997	4 741	(9.4)	1 295	(2.6)	44 390	(88.0)	50 426
1998	6 337	(10.8)	1 691	(2.9)	50 606	(86.3)	58 634
1999	9 512	(13.6)	2 190	(3.1)	58 167	(83.3)	69 869
2000	11 829	(15.3)	2 759	(3.7)	62 707	(81.1)	77 295
2001	9 223	(12.8)	2 719	(3.8)	59 948	(83.4)	71 890
2002	5 749	(9.5)	2 533	(4.2)	52 094	(86.3)	60 376
2003	5 199	(8.1)	2 900	(4.5)	56 349	(87.4)	64 448

Table 12: Refusals as a Percentage of Decisions by Type of Application

Year	Outline		Type of Application		Permission	All Types
	Permission		Approval			
1992	30.9		2.3		8.8	10.8
1993	27.7		2.2		7.9	9.6
1994	23.4		2.9		7.5	8.9
1995	24.3		2.3		7.9	9.1
1996	24.0		2.7		8.1	9.3
1997	24.9		2.6		8.5	9.9
1998	26.2		1.1		13.3	11.5
1999	28.5		1.7		11.2	13.3
2000	32.6		2.8		17.9	16.6
2001	33.7		2.4		14.9	16.9
2002	35.4		3.2		14.5	15.9
2003	38.0		4.0		16.0	17.0

Tables 13, 14 and 15

A decision on a planning application must be made by the planning authority within a period of eight weeks. This period can be extended in two ways. The first occurs when a planning authority requests additional information (S34(8)(b) of the 2000 Act, Art. 33 of the 2001 Regulations). A second procedure, requiring the written consent of the applicant, allows the planning authority to extend the eight-week period. This provision was introduced in the 1976 Act (Table 15) and is now provided under S34(9) of the 2000 Act.

Table 14 gives the total figures for both procedures. Table 15 gives the figures for the extension provision introduced in the 1976 Act.

From 1990 onwards deferred applications referred to those arising from 'request for further information' and to cases dealt with under this second procedure. Deferrals arising from the applicant's consent increased as a percentage of total deferrals in 1998 and 2000: -

1998:24%; 1999: 23%; 2000: 30%; 2001: 26%; 2002: 23% and 2003: 23%.

Table 13: Applications Deferred by Type of Application

Year	Type of Application ¹						Total
	Outline		Approval		Permission		
	Permission	%		%		%	
1992	1 890	(15.2)	169	(1.4)	10 399	(83.5)	12 458
1993	1 651	(15.7)	218	(2.1)	8 651	(82.2)	10 520
1994	1 536	(13.6)	266	(2.4)	9 471	(84.0)	11 273
1995	1 628	(13.2)	239	(1.9)	10 432	(84.8)	12 299
1996	1 972	(13.3)	307	(2.1)	12 559	(84.6)	14 838
1997	2 438	(14.7)	351	(2.1)	13 816	(83.2)	16 605
1998	3 193	(15.4)	447	(2.2)	17 061	(82.4)	20 701
1999	5 179	(18.9)	660	(2.4)	21 613	(78.7)	27 452
2000	5 934	(19.9)	889	(3.0)	22 993	(77.1)	29 816
2001	4 742	(15.5)	1 041	(3.4)	24 853	(81.1)	30 636
2002	2 527	(11.6)	813	(3.7)	18 512	(84.7)	21 852
2003	1 562	(9.2)	519	(3.1)	14 811	(87.7)	16 892

Table 14: Applications Deferred as Percentage of Applications ¹

Area	Deferred total	Deferral rate	Deferred total	Deferral rate	Change in rate '02 to '03
	2002		2003		
Carlow	187	27.1	137	14.7	-12.4
Cavan	340	21.6	215	10.4	-11.3
Clare	753	29.7	693	22.9	-6.8
Cork	3 190	54.9	665	9.4	-45.6
Donegal	1 278	27.4	836	15.5	-11.9
Dun Laoghaire/Rathdown	252	16.8	276	15.8	-1.0
Fingal	245	12.9	280	13.9	1.0
Galway	1 476	28.2	1 616	22.4	-5.8
Kerry	1 009	27.6	667	15.3	-12.3
Kildare	1 075	56.6	1 292	66.2	9.6
Kilkenny	591	40.8	482	27.4	-13.3
Laois	363	39.1	224	18.7	-20.4
Leitrim	341	48.5	302	31.9	-16.6
Limerick	753	38.0	613	26.8	-11.2
Longford	193	29.7	130	16.6	-13.1
Louth	424	26.2	330	17.3	-8.9
Mayo	1 183	43.3	774	20.3	-23.1
Meath	716	36.1	939	37.7	1.6
Monaghan	518	44.2	353	28.1	-16.0
North Tipperary	528	35.4	480	28.6	-6.8
Offaly	409	33.3	210	16.5	-16.8
Roscommon	742	54.3	589	34.4	-19.9
Sligo	380	37.9	412	32.7	-5.2
South Dublin	303	27.7	220	14.0	-13.7
South Tipperary	242	17.2	214	14.2	-2.9
Waterford	405	31.8	185	12.1	-19.6
Westmeath	357	31.8	252	20.1	-11.8
Wexford	1 665	50.8	1 937	53.0	2.1
Wicklow	526	32.7	508	25.0	-7.7
Sub-total	20 444	35.5	15 831	22.7	-12.8
Cork City Council	301	37.4	163	16.9	-20.5
Dublin City Council	771	24.8	568	12.7	-12.1
Galway City Council	128	19.0	179	30.9	11.9
Limerick City Council	106	31.7	70	20.7	-11.0
Waterford City Council	102	29.1	81	17.4	-11.6
Sub-total	1 408	26.7	1 061	15.5	-11.2
Total	21 852	34.8	16 892	22.1	-12.7

¹: See text in introduction to table. This table should be read in conjunction with the following Table 15. The data in Table 15 are incorporated in the figures in this table.

Table 15: Applications where Consideration Time has been Extended under S34(9) of 2000 Act

Area	1998	1999	2000	2001	2002	2003
Carlow	4	18	33	67	63	68
Cavan	5	16	26	52	63	20
Clare	134	214	406	539	265	192
Cork	417	606	48	773	780	297
Donegal	173	179	201	221	204	95
Dun Laoghaire/Rathdown	49	27	32	8	18	7
Fingal	132	708	591	632	19	11
Galway	339	505	690	644	654	855
Kerry	74	221	502	742	483	370
Kildare	541	856	932	691	371	279
Kilkenny	87	189	153	219	117	33
Laois	11	28	15	26	9	18
Leitrim	4	6	24	29	19	11
Limerick	74	130	0	126	104	101
Longford	14	6	0	39	17	8
Louth	145	201	224	145	40	43
Mayo	248	139	365	437	207	208
Meath	100	331	401	375	95	61
Monaghan	8	9	21	21	8	15
North Tipperary	60	133	313	326	204	212
Offaly	32	52	77	51	38	18
Roscommon	56	111	128	99	90	18
Sligo	134	78	126	183	86	72
South Dublin	193	187	199	352	141	26
South Tipperary	20	53	69	23	18	12
Waterford	14	21	39	25	23	25
Westmeath	430	161	844	249	56	7
Wexford	75	20	12	13	41	19
Wicklow	217	361	797	360	222	183
Sub-total	4 390	5 566	8 268	7 467	4 455	3 284
Cork	63	47	0	0	86	55
Dublin	528	574	609	576	465	543
Galway	36	32	37	28	51	11
Limerick	11	17	25	21	20	18
Waterford	8	16	3	16	1	3
Sub-total	646	686	674	641	623	630
Total	5 036	6 252	8 942	8 108	5 078	3 914

Tables 16, 16A, 17 and 17A

Tables 16, 16A, 17 and 17A give information on the use of procedures through which elected representatives can influence the planning control process: S140 of the Local Government Act, 2001 (formerly S4 of the City and County Management (Amendment) Act, 1955) and the procedure of material contravention of the development plan, as provided for under S34 of the 2000 Act.

While only limited use is made of these procedures overall, some authorities do use them to a considerable extent. Table 16A shows that the S140 procedure was used in 9 authorities, i.e. 9 county authorities account for 100% of the total usage. Table 16 indicates that the number of such motions was 130 (381% increase on 2002) the number passed by Council increased to 101 (a 339% increase on the 2002 figure). The number of material contraventions resulting from S140 motions in 2003 continued to increase by 240% on the 2002 figure to 17 instances.

Tables 17 and 17A show the use of the procedure under S34 (6) of the Planning and Development Act, 2000 which provides that a development may materially contravene the Development Plan subject to certain procedures being complied with. In this instance a decision to grant planning permission requires the vote of not less than three quarters of the members of the Council in favour. The fall in the number of 'material contraventions' in 2003 was in the order of 11%. The overall number of material contraventions passed by local authorities in 2002 was 112. This represented a 20% increase on the 93 material contraventions passed in 2001. In 2003, 107 material contraventions were passed by local authorities, i.e. a 4% decrease on the 2002 figure.

Table 16: Applications where Section 140 procedures were followed

Procedure	1997	1998	1999	2000	2001	2002	2003
- Section 140 Procedure							
• On Agenda	28	32	47	81	64	27	130
• Passed by Council	3	8	11	34	42	23	101
• Superseded by Material Contravention	18	20	22	28	10	5	17

Table 16A: Applications where Section 140 procedures were followed by County

Area	Agenda	Passed	Superseded by Material Contravention
Carlow	0	0	0
Cavan	0	0	0
Clare	0	0	0
Cork	0	0	0
Donegal	5	4	4
Dun Laoghaire-Rathdown	0	0	0
Fingal	0	0	0
Galway	0	0	0
Kerry	65	59	3
Kildare	0	0	0
Kilkenny	0	0	0
Laois	1	0	1
Leitrim	0	0	0
Limerick	0	0	0
Longford	0	0	0
Louth	9	0	6
Mayo	2	0	0
Meath	0	0	0
Monaghan	2	1	1
North Tipperary	1	1	0
Offaly	0	0	0
Roscommon	0	0	0
Sligo	0	0	0
South Dublin	0	0	0
South Tipperary	0	0	0
Waterford	0	0	0
Westmeath	0	0	0
Wexford	9	9	2
Wicklow	36	27	0
Sub-total	130	101	17
Cork	0	0	0
Dublin	0	0	0
Galway	0	0	0
Limerick	0	0	0
Waterford	0	0	0
Sub-total	0	0	0
Total	130	101	17

Table 17 Applications where Procedure for Material Contravention of the Development Plan was followed

Procedure	1997	1998	1999	2000	2001	2002	2003
Material Contravention							
• Notice of Intention	106	142	156	141	108	131	117
• Passed by Council	88	122	138	132	93	112	107

Table 17A: Applications where Procedure for Material Contravention of the Development Plan was followed by County

Area	Agenda	Passed
Carlow	0	0
Cavan	0	0
Clare	1	1
Cork	1	1
Donegal	9	8
Dun Laoghaire	0	0
Fingal	0	0
Galway	4	4
Kerry	21	20
Kildare	12	11
Kilkenny	0	0
Laois	8	7
Leitrim	0	0
Limerick	1	1
Longford	1	0
Louth	2	2
Mayo	6	4
Meath	2	2
Monaghan	4	4
North Tipperary	2	2
Offaly	2	2
Roscommon	3	3
Sligo	0	0
South Dublin	0	0
South Tipperary	4	4
Waterford	2	2
Westmeath	6	6
Wexford	9	9
Wicklow	10	7
Sub-total	110	100
Cork	1	1
Dublin	0	0
Galway	3	3
Limerick	0	0
Waterford	3	3
Sub-total	7	7
Total	117	107

Tables 18 and 19

Table 18 provides information on the type of development applied for in planning applications. It is derived from the information on planning fees and the land use categories that are defined in the Planning and Development Regulations, 2001.

Tables 18 and 19 provide data on the number of applications in each fee class. Small discrepancies may occur between the total number of applications in these tables and the actual number presented in Table 2. This can be for a number of reasons: certain applications are exempted from fees, other applications falling into different fee classes may have been counted more than once, and applications received in the

earlier part of the year may have been withdrawn by year end.

In 2003 eight out of every ten applications were for residential development (class 1 and class 2 - houses and domestic 'extensions').

For comparative purposes the classes of development for 1998-2001 have been converted from the classes as per the Local Government (Planning and Development) Regulations, 1994 to the classes at Schedule 9 of the Planning and Development Regulations, 2001, see Appendix A.

Table 18: Planning Applications by Class of Development

Year	1	2	3	4	5	6	7	8	9	10	11	12	13	Total
1998	35 832	16 618	1 397	9 076	8	88	163	229	564	131	92	10	2 487	66 695
%	53.7	24.9	2.1	13.6	0.0	0.1	0.2	0.3	0.8	0.2	0.1	0.0	3.7	100.0
1999	46 804	18 841	1 606	8 865	3	51	211	225	503	80	26	9	2 469	79 693
%	58.7	23.6	2.0	11.1	0.0	0.1	0.3	0.3	0.6	0.1	0.0	0.0	3.1	100.0
2000	54 594	18 610	1 271	8 529	10	57	200	261	523	98	21	12	3 154	87 340
%	62.5	21.3	1.5	9.8	0.0	0.1	0.2	0.3	0.6	0.1	0.0	0.0	3.6	100.0
2001	42 361	17 846	2 056	8 116	20	80	164	217	789	125	28	10	3 688	75 500
%	56.1	23.6	2.7	10.7	0.0	0.1	0.2	0.3	1.0	0.2	0.0	0.0	4.9	100.0
2002	35 455	14 627	1 940	6 745	255	92	139	148	320	100	31	12	2 939	62 803
%	56.5	23.3	3.1	10.7	0.4	0.1	0.2	0.2	0.5	0.2	0.0	0.0	4.7	100.0
2003	46 535	16 124	1 485	8 256	105	66	138	177	371	140	48	7	3 094	76 546
%	60.8	21.1	1.9	10.8	0.1	0.1	0.2	0.2	0.5	0.2	0.1	0.0	4.0	100.0

Table 19: Applications by Area and Class of Development 2003

Area	Class 1	Class 2	Class 3	Class 4	Class 5	Class 6	Class 7	Class 8
Carlow	540	165	39	142	0	0	4	1
Cavan	1 479	309	62	197	0	2	2	1
Clare	1 982	536	76	289	0	0	0	4
Cork	4 481	1 579	172	583	0	0	11	9
Donegal	4 092	754	76	237	29	10	12	4
Dun Laoghaire-Rathdown	454	996	1	230	0	0	2	0
Fingal	665	584	45	377	0	2	8	12
Galway	6 355	307	77	247	1	1	2	0
Kerry	2 861	925	81	368	0	6	12	2
Kildare	1 033	438	69	257	0	5	1	1
Kilkenny	961	400	115	198	0	4	3	12
Laois	750	284	34	121	0	0	0	6
Leitrim	650	151	8	75	1	0	2	14
Limerick	1 448	484	65	162	0	1	0	0
Longford	536	125	23	62	1	0	2	2
Louth	1 173	428	34	144	67	1	1	2
Mayo	3 227	156	32	276	0	0	0	12
Meath	1 217	713	82	315	5	25	4	9
Monaghan	813	210	47	109	0	1	1	2
North Tipperary	1 149	292	34	124	0	0	2	1
Offaly	881	196	26	141	0	2	2	2
Roscommon	1 214	204	42	146	0	3	2	2
Sligo	782	273	25	141	0	1	1	1
South Dublin	499	615	3	292	0	0	14	26
South Tipperary	866	295	52	197	0	0	7	3
Waterford	941	322	50	115	0	0	1	1
Westmeath	785	250	19	127	0	0	1	3
Wexford	2 414	786	60	291	1	1	10	7
Wicklow	991	608	32	169	0	0	6	1
Sub-total	45 239	13 385	1 481	6 132	105	65	113	140
Cork	287	422	0	230	0	0	0	0
Dublin	672	1 882	0	1 539	0	0	3	21
Galway	131	171	0	124	0	0	17	8
Limerick	73	136	0	96	0	0	2	8
Waterford	133	128	4	135	0	1	3	0
Sub-total	1 296	2 739	4	2 124	0	1	25	37
Total	46 535	16 124	1 485	8 256	105	66	138	177

Table 19: Applications by Area and Class of Development (Continued)

Area	Class 9	Class 10	Class 11	Class 12	Class 13	Total
Carlow	1	3	2	0	35	932
Cavan	3	1	0	0	20	2 076
Clare	6	3	1	1	132	3 030
Cork	9	9	3	0	246	7 102
Donegal	13	6	1	2	148	5 384
Dun Laoghaire-Rathdown	16	10	0	0	33	1 742
Fingal	30	5	0	0	292	2 020
Galway	3	1	0	0	227	7 221
Kerry	27	12	2	0	77	4 373
Kildare	6	2	0	0	139	1 951
Kilkenny	18	2	1	0	42	1 756
Laois	2	0	0	0	0	1 197
Leitrim	4	2	0	1	38	946
Limerick	2	6	0	0	118	2 286
Longford	1	1	21	0	8	782
Louth	18	2	1	1	33	1 905
Mayo	18	0	0	0	93	3 814
Meath	6	6	5	1	104	2 492
Monaghan	10	0	0	0	61	1 254
North Tipperary	2	6	1	0	66	1 677
Offaly	2	0	0	0	20	1 272
Roscommon	0	1	0	0	99	1 713
Sligo	12	4	0	0	19	1 259
South Dublin	43	9	0	0	67	1 568
South Tipperary	6	18	0	0	60	1 504
Waterford	2	7	0	1	85	1 525
Westmeath	0	0	0	0	70	1 255
Wexford	14	1	5	0	66	3 656
Wicklow	16	14	4	0	187	2 028
Sub-total	290	131	47	7	2585	69 720
Cork	2	2	1	0	20	964
Dublin	0	5	0	0	358	4 480
Galway	48	1	0	0	79	579
Limerick	7	0	0	0	16	338
Waterford	24	1	0	0	36	465
Sub-total	81	9	1	0	509	6826
Total	371	140	48	7	3 094	76 546

Tables 20 and 21

Tables 20 and 21 list the total amount of development contributions which planning authorities receive through the procedure of levying charges in planning conditions (Section 48 of the 2000 Act).

The amount received in contributions has continued to rise since 1988 with an exceptional decline of approximately 2.5% between 1992 and 1993. There was an increase of approximately 15% in 1998, 31% in 1999, 27% in 2000, 11% in 2001, 24% in 2002 and 43% in 2003. Increases or decreases in the figures, may be the result of a number of factors such as changes in the rates charged, size and type of developments carried out in a particular year, the overall level of implementation of planning permissions and perhaps increased enforcement of planning conditions.

Table 20: Development Contributions

Year	Total Sum Received €
1988	8 190 698
1989	11 449 212
1990	13 574 626
1991	15 679 526
1992	20 182 736
1993	19 659 661
1994	26 086 143
1995	28 440 440
1996	45 939 121
1997	57 813 153
1998	66 326 093
1999	87 171 931
2000	110 380 157
2001	121 976 012
2002	150 995 463
2003	215 449 057

Table 21: Development Contributions by Area

Area	Contributions	
	2002	2003
Carlow	527 526	4 108 871
Cavan	1 250 997	1 726 563
Clare	1 848 373	5 030 619
Cork	13 650 879	18 640 420
Donegal	2 886 599	4 077 770
Dun Laoghaire/Rathdown	7 761 776	8 248 405
Fingal	16 338 872	22 828 194
Galway	3 472 987	6 283 355
Kerry	3 540 009	4 142 871
Kildare	9 249 082	9 681 082
Kilkenny	3 242 523	3 990 300
Laois	2 531 622	4 058 654
Leitrim	763 472	1 904 028
Limerick	2 896 451	3 246 640
Longford	1 438 301	1 306 556
Louth	8 993 794	11 621 455
Mayo	786 940	1 266 487
Meath	9 506 636	21 223 966
Monaghan	1 021 967	1 187 936
North Tipperary	1 014 080	2 440 985
Offaly	1 194 923	3 449 130
Roscommon	1 958 157	2 527 829
Sligo	2 416 388	2 397 997
South Dublin	11 243 420	15 249 361
South Tipperary	2 003 725	3 751 818
Waterford	1 596 213	1 663 166
Westmeath	1 819 521	3 793 639
Wexford	6 507 272	8 043 630
Wicklow	7 929 194	8 951 778
Sub-total	129 391 699	186 843 506
Cork	3 094 378	7 521 882
Dublin	8 654 092	11 378 014
Galway	5 142 663	5 795 645
Limerick	2 493 006	2 521 556
Waterford	2 219 625	1 388 454
Sub Total	21 603 764	28 605 551
Total	150 995 463	215 449 057

II Enforcement

Tables 22, 23, 24, 25, 26 and 27

These tables give information on the number of enforcement cases. Enforcement cases are dealt with under three principal procedures under the **1963 Act (as amended)**:

- Prosecution under Section 24;
- Serving of an Enforcement Notice under Sections 31 and 35 as well as Sections 32, 36 and 37;
- Serving of a Warning Notice under Section 26 of the 1976 Act (as amended).

From 11 March 2002 onwards enforcement cases commenced under the **2000 Act** come under three procedures as follows:

- Offences /Unauthorised development under Section 151,
- Serving of enforcement notices under Section 154,
- Serving of enforcement notices in cases of urgency Section 155.

Please note that the issuing of the notice and the compliance with it need not necessarily take place within the same reporting year these tables will be better evaluated in the light of next year's returns.

Table 24 gives information on enforcement cases initiated and convicted by area under the 1963 and 1976 Planning Acts.

Table 25 gives information on enforcement cases initiated and convicted by area and procedure under the 2000 Act. It also shows the number of enforcement notices complied with.

The fourth principal enforcement procedure is based on the jurisdiction of the High Court and the Circuit Court to grant injunctions where unauthorised development is taking place. Not only the planning authority but any member of the public can make an application to the Court under Section 160 of the 2000 Act (prior to 11 March 2002 Section 27 of the 1976 Act (as amended)). The use of this procedure has therefore been separated into two categories: initiation by the planning authority and initiation by 'other bodies or individuals' and is set out at Tables 26 and 27.

As both statistics are based on figures provided by the planning authorities, the second category may be underestimated because the planning authority need not necessarily be aware of applications by third parties.

Table 22: Enforcement Cases Initiated, by Procedure

Enforcement procedure	1998	1999	2000	2001	2002	2003
S24 1963 Act	6	27	59	32	5	-
S21 1963 Act	952	1 070	1 173	1 530	253	2
S32 1963 Act	6	14	12	26	4	-
S35 1963 Act	61	51	29	12	15	-
S36 1963 Act	0	0	0	0	0	-
S37 1963 Act	0	0	0	0	0	-
S26 1976 Act	272	234	381	244	50	-
SI51 2000 Act	-	-	-	-	532	239
SI54 2000 Act	-	-	-	-	542	642
SI55 2000 Act	-	-	-	-	13	33
Total	1 297	1 396	1 654	1 844	1 414	916

Table 23: Enforcement Cases Convicted, by Procedure

Enforcement procedure	1998	1999	2000	2001	2002	2003
S24 1963 Act	3	2	22	4	0	
S31 1963 Act	203	185	226	321	38	
S32 1963 Act	0	0	0	6	2	
S35 1963 Act	10	18	2	0	0	
S36 1963 Act ¹	-	-	0	0	0	
S37 1963 Act	0	0	0	0	0	
S26 1976 Act	33	5	2	2	10	
SI51 2000 Act	-	-	-	-	4	23
SI54 2000 Act	-	-	-	-	44	155
SI55 2000 Act	-	-	-	-	13	18
Total	249	210	252	333	111	196

¹ S36 makes no provision for conviction

Table 24: Enforcements initiated under 1963 and 1976 Act in 2003 by Area

Area	No. Initiated	No. Convictions on Indictment	No. Summary Convictions
Carlow	0	0	0
Cavan	0	0	0
Clare	0	0	0
Cork	0	0	0
Donegal	0	0	0
Dun Laoghaire-Rathdown	0	0	0
Fingal	0	0	0
Galway	0	0	0
Kerry	0	0	0
Kildare	0	0	0
Kilkenny	0	0	0
Laois	0	0	0
Leitrim	0	0	0
Limerick	0	0	0
Longford	0	0	0
Louth	0	0	0
Mayo	0	0	0
Meath	0	0	0
Monaghan	0	0	0
North Tipperary	0	0	0
Offaly	0	0	0
Roscommon	0	0	0
Sligo	0	0	0
South Dublin	0	0	0
South Tipperary	0	0	0
Waterford	0	0	0
Westmeath	0	0	0
Wexford	0	0	0
Wicklow	0	0	0
Sub-total	0	0	0
Cork	0	0	0
Dublin	0	0	0
Galway	2	0	0
Limerick	0	0	0
Waterford	0	0	0
Sub-total	2	0	0
Total	2	0	0

Table 25: Enforcement Cases by Area and Procedure under the Planning and Development Act 2000 for 2003

	Section 151/2000			Section 154/2000				
	Initiated	Convicted on Indictment	Convicted on Summary Prosecution	No. of Notices Issued	No. of Notices Complied with	No. Prosecutions Initiated	Convicted on Indictment	Convicted on Summary Prosecution
Carlow	0	0	0	14	5	1	0	0
Cavan	1	1	0	14	2	0	0	0
Clare	42	0	0	179	38	19	0	13
Cork	0	0	0	32	12	3	0	3
Donegal	39	1	2	30	10	8	0	7
Dun Laoghaire								
-Rathdown	0	0	0	139	27	12	0	1
Fingal	0	0	0	61	29	20	0	0
Galway	0	0	0	156	86	37	0	7
Kerry	0	0	0	133	92	4	0	0
Kildare	11	2	1	126	25	12	2	7
Kilkenny	3	2	1	63	10	31	0	8
Laois	0	0	0	39	15	12	0	2
Leitrim	2	0	2	26	5	5	0	0
Limerick	0	0	0	60	10	44	0	13
Longford	3	0	0	13	4	9	0	0
Louth	54	0	0	85	29	14	0	6
Mayo	0	0	0	11	1	0	0	0
Meath	0	0	0	118	47	16	0	0
Monaghan	0	0	0	27	5	9	0	4
North Tipperary	1	0	0	35	10	15	0	2
Offaly	5	0	0	22	6	5	0	0
Roscommon	0	0	0	99	13	11	0	0
Sligo	12	0	2	22	4	3	0	1
South Dublin	0	0	0	271	32	110	0	44
South Tipperary	41	0	0	16	8	3	0	0
Waterford	15	0	9	43	19	7	0	4
Westmeath	10	0	0	26	3	0	0	0
Wexford	0	0	0	230	51	125	1	22
Wicklow	0	0	0	188	8	12	0	4
Sub Total	239	6	17	2278	606	547	3	148
Cork	0	0	0	3	0	0	0	0
Dublin	0	0	0	67	17	19	0	0
Galway	0	0	0	136	56	71	0	2
Limerick	0	0	0	3	0	3	0	0
Waterford	0	0	0	31	15	2	0	2
Sub - Total	0	0	0	240	88	95	0	4
Total	239	6	17	2518	694	642	3	152

Table 25: Enforcement Cases by Area and Procedure under the Planning and Development Act 2000 for 2003

Section 155/2000					
	No. of Notices Issued	No. of Notices Complied with	No. Prosecutions Initiated	Convicted on Indictment	Convicted on Summary Prosecution
Carlow	0	0	0	0	0
Cavan	0	0	0	0	0
Clare	4	3	0	0	0
Cork	7	0	5	0	5
Donegal	3	0	1	0	0
Dun Laoghaire					
-Rathdown	0	0	0	0	0
Fingal	5	5	0	0	0
Galway	18	7	3	0	2
Kerry	0	0	0	0	0
Kildare	0	0	0	0	0
Kilkenny	0	0	0	0	0
Laois	0	0	0	0	0
Leitrim	0	0	0	0	0
Limerick	5	0	4	0	4
Longford	0	0	0	0	0
Louth	8	2	4	0	3
Mayo	0	0	0	0	0
Meath	0	0	0	0	0
Monaghan	1	0	1	0	0
North Tipperary	4	2	1	0	0
Offaly	13	2	4	0	0
Roscommon	0	0	0	0	0
Sligo	0	0	0	0	0
South Dublin	0	0	0	0	0
South Tipperary	0	0	0	0	0
Waterford	21	6	8	0	2
Westmeath	7	0	0	0	0
Wexford	3	1	0	0	0
Wicklow	43	0	0	0	0
Sub Total	142	28	31	0	16
Cork	0	0	0	0	0
Dublin	0	0	0	0	0
Galway	0	0	0	0	0
Limerick	0	0	0	0	0
Waterford	8	5	2	0	2
Sub - Total	8	5	2	0	2
Total	150	33	33	0	18

Table 26: Applications for Injunction Order to High Court S160 of 2000 Act¹

Year	Applications by Planning Authority		Applications by Others	
	Number of applications	Number granted	Number of applications	Number granted
1995	66	20	2	2
1996	42	27	2	1
1997	29	17	0	0
1998	51	25	1	0
1999	53	26	1	1
2000	60	29	2	1
2001	146	68	5	1
2002	35	20	1	0
2003	11	8	4	0

Table 27: Applications for Injunction Order to Circuit Court S160 of 2000 Act¹

Year	Applications by Planning Authority		Applications by Others	
	Number of applications	Number granted	Number of applications	Number granted
1995	21	8	0	0
1996	37	17	2	2
1997	37	13	2	2
1998	52	31	2	0
1999	71	23	3	3
2000	66	27	5	4
2001	89	15	4	2
2002	144	37	2	0
2003	199	67	2	0

¹ Applies from 11 March 2002 onwards

III Fees and Administration

Tables 28, 29, 30, 31 and 32

The changes in fee class classification are noted in the introduction to Tables 18 and 19, the revised fee classes under the Planning and Development Regulations, 2001 are set out at Appendix A. Tables 28, 29 and 30 deal with planning application fees. As in previous years, planning fees for Class 4 applications continued to be quite high. Class 4 accounts for over 50% of fees. Table 30 gives a detailed account of the fees received in each area specified by class of development (see Appendix A).

Table 31 gives the fees received under a number of categories other than for planning application fees. Table 32 gives the overall amounts for each category of fees.

Table 28: Total Amount Received in Application Fees by Class of Development - with Percentage Breakdown

2003	€s	Percentage	2003	€s	Percentage
Class 1	12 678 315	30.60	Class 8	86 294	0.21
Class 2	2 671 022	6.45	Class 9	139 352	0.34
Class 3	429 867	1.04	Class 10	71 648	0.17
Class 4	21 020 006	50.74	Class 11	214 070	0.52
Class 5	310 820	0.75	Class 12	1 200	0.00
Class 6	384 429	0.93	Class 13	3 235 647	7.81
Class 7	183 281	0.44			
Total				41 425 950	100

Table 29: Total Amount Received in Application Fees by Class of Development

Class of Development	2000	2001	2002	2003
1	11 998 112	8 630 268	6 750 767	12 678 315
2	1 276 870	1 078 767	929 690	2 671 022
3	607 967	1 004 086	605 026	429 867
4	18 183 683	18 058 364	15 220 846	21 020 006
5	15 276	8 967	115 775	310 820
6	109 858	345 445	365 154	384 429
7	84 294	110 258	54 116	183 281
8	73 809	76 056	134 214	86 294
9	135 499	500 623	97 771	139 352
10	23 621	25 969	26 630	71 648
11	9 013	19 338	32 863	214 070
12	1 282	1 745	1 628	1 200
13	1 689 185	2 231 169	2 591 046	3 235 647
Total	34 208 468	32 091 053	26 925 526	41 425 950

Table 30: Amount Received in Application Fees by Area and Class of Development

Area	Class 1	Class 2	Class 3	Class 4	Class 5	Class 6	Class 7	Class 8
Carlow	165 399	7 785	0	518 341	0	0	315	0
Cavan	286 386	18 877	37 422	316 010	0	63 261	80	298
Clare	259 533	34 297	17 403	713 707	0	0	0	1 294
Cork	1 077 232	120 611	38 462	1 940 727	0	0	55 705	4 213
Donegal	580 985	48 515	16 428	612 055	111 390	2 250	43 324	1 000
Dun Laoghaire-Rathdown	446 670	41 341	0	1 024 236	0	0	160	0
Fingal	517 282	65 897	1 790	1 475 989	0	6 014	26 475	4 148
Galway	906 708	25 212	24 554	429 190	240	8 688	430	0
Kerry	485 415	143 147	15 730	897 948	0	29 356	4 028	400
Kildare	521 924	23 032	23 871	1 273 652	0	16 750	80	6 436
Kilkenny	260 069	14 307	16 331	650 305	0	38 000	464	5 209
Laois	264 612	29 015	15 400	380 317	0	0	0	4 043
Leitrim	124 612	5 273	780	180 454	34	0	220	666
Limerick	445 299	18 211	18 994	449 829	0	0	0	0
Longford	124 271	7 543	4 280	69 689	9 886	0	136	8 326
Louth	276 383	17 081	34 701	324 528	176 677	0	1 243	200
Mayo	479 807	7 651	4 503	594 068	0	0	0	3 012
Meath	759 212	76 191	30 284	1 131 521	12 299	202 844	5 987	7 443
Monaghan	111 704	14 044	10 584	365 638	0	2 788	80	240
North Tipperary	153 564	12 202	9 206	307 160	0	0	195	1 010
Offaly	216 233	8 495	11 726	240 754	0	11 475	209	200
Roscommon	187 616	17 225	5 936	334 911	0	1 000	65	5 298
Sligo	173 123	15 227	3 816	872 622	0	0	450	200
South Dublin	607 196	282 279	723	1 198 395	0	0	4 311	13 860
South Tipperary	392 177	92 047	20 304	249 467	0	0	971	4 430
Waterford	175 012	11 786	30 708	239 209	0	0	1 186	200
Westmeath	246 849	12 085	3 055	430 560	0	0	80	787
Wexford	751 526	60 263	22 594	632 906	294	1 700	28 561	2 940
Wicklow	269 726	44 797	5 974	387 494	0	0	2 248	1 472
Sub-total	11 266 522	1 274 438	425 559	18 241 684	310 820	384 126	177 003	77 326
Cork	523 105	26 015	0	655 652	0	0	0	0
Dublin	479 758	1 342 008	0	1 113 488	0	0	525	5 946
Galway	104 693	13 791	0	289 542	0	0	2 984	1 880
Limerick	112 048	7 188	0	240 163	0	0	1 149	1 142
Waterford	192 190	7 583	4 307	479 477	0	303	1 620	0
Sub-total	1 411 793	1 396 584	4 307	2 778 322	0	303	6 278	8 968
Total	12 678 315	2 671 022	429 867	21 020 006	310 820	384 429	183 281	86 294

Table 30: Amount Received in Application Fees by Area and Class of Development (Continued)

Area	Class 9	Class 10	Class 11	Class 12	Class 13	Fees Total
Carlow	380	480	3 376	0	7 073	703 148
Cavan	695	200	0	0	44 903	768 131
Clare	2 054	14 576	388	200	91 970	1 135 423
Cork	6 930	19 417	32 413	0	100 310	3 396 019
Donegal	2 284	1 400	200	400	186 915	1 607 146
Dun Laoghaire-Rathdown	3 212	1 720	0	0	7 307	1 524 646
Fingal	39 950	480	0	0	84 706	2 222 731
Galway	3 011	1 084	0	0	525 604	1 924 721
Kerry	7 461	4 617	4 290	0	44 007	1 636 398
Kildare	911	9 522	0	0	307 570	2 183 749
Kilkenny	4 593	550	0	0	17 691	1 007 519
Laois	580	0	450	0	910	695 327
Leitrim	360	200	0	200	65 201	378 000
Limerick	0	1 530	0	0	79 628	1 013 490
Longford	160	170	127 135	0	6 497	358 092
Louth	4 001	200	263	0	60 245	895 520
Mayo	2 792	0	0	0	138 198	1 230 030
Meath	2 993	2 070	8 884	200	68 430	2 308 359
Monaghan	2 616	0	0	0	34 372	542 066
North Tipperary	420	1 890	615	0	11 228	497 491
Offaly	1 680	0	0	0	48 352	539 124
Roscommon	0	80	0	0	44 433	596 565
Sligo	2 424	1 987	0	0	2 269	1 072 117
South Dublin	17 140	1 960	0	0	90 921	2 216 784
South Tipperary	528	2 210	0	0	59 658	821 793
Waterford	605	1 437	0	200	108 179	568 523
Westmeath	387	0	0	0	92 565	786 367
Wexford	3 310	1 557	19 529	0	10 819	1 535 999
Wicklow	2 219	1 124	2 406	0	599 450	1 316 911
Sub-total	113 694	70 461	199 948	1 200	2 939 407	35 482 188
Cork	1 098	80	14 122	0	9 420	1 229 492
Dublin	0	788	0	0	255 871	3 198 383
Galway	12 415	80	0	0	9 561	434 945
Limerick	3 304	0	0	0	4 041	369 034
Waterford	8 842	240	0	0	17 347	711 907
Sub-total	25 658	1 188	14 122	0	296 240	5 943 762
Total	139 352	71 648	214 070	1 200	3 235 647	41 425 950

Table 31: Fees Received Other than Application Fees by Area and by Type of Fee

Area	Extension	Register	Licence	Exemption	Compliance	Miscellaneous	Submissions & Observations	Outdoor Events	Total
Carlow	62	0	8 061	226	2249	17 104	4 920	0	32 622
Cavan	124	0	3 660	0	85	9 879	8 530	0	22 278
Clare	806	0	3 753	640	70	31 124	10 305	2 500	49 198
Cork	11 535	0	26 842	6 085	53 770	26 051	34 950	1 550	160 783
Donegal	441	0	1 910	0	13 750	96 766	13 812	0	126 679
Dun Laoghaire									
-Rathdown	n/a	0	0	3 680	0	21 737	55 131	0	80 548
Fingal	496	22 600	0	1 120	3 170	23 802	25 299	0	76 487
Galway	14 583	20 233	3 890	496	0	35 893	15 416	0	90 510
Kerry	809	0	26 576	0	3 466	32 355	18 862	0	82 068
Kildare	0	534	456 532	3 540	462	49 663	25 260	5 000	540 991
Kilkenny	124	1 471	6 411	1 920	3 496	12 468	8 160	2 500	36 550
Laois	0	2 633	133	80	0	12 159	3 745	0	127 750
Leitrim	62	1 000	542	480	850	4 293	2 180	0	9 406
Limerick	1 104	10 264	1 855	0	0	0	14 410	2 500	30 133
Longford	62	0	0	80	0	2 919	1 920	0	4 981
Louth	560	145	18 751	800	88	252 976	12 173	0	285 493
Mayo	2 041	175	2 875	880	260	25 620	10 900	0	42 751
Meath	62	3 042	7 055	2 080	5 793	27 298	20 030	2 500	67 859
Monaghan	434	114	7 627	3 995	1 025	10 288	13 396	0	36 880
North Tipperary	114	1 950	6 515	0	80	16 129	5 172	0	29 961
Offaly	0	0	5 160	240	702	20 873	3 880	0	30 855
Roscommon	186	0	839	320	0	12 077	5 028	0	18 450
Sligo	217	2 065	300	400	1 428	14 876	6 505	0	25 791
South Dublin	491	0	0	1 280	0	8 747	64 537	0	75 055
South Tipperary	127	1 680	12 137	1 200	2 881	31 949	7 424	0	57 398
Waterford	142	120	15 954	1 120	640	17 039	11 430	0	46 445
Westmeath	384	6 465	6 981	560	200	25 963	6 560	0	47 113
Wexford	434	0	18 401	2 560	1 168	58 935	14 268	0	95 766
Wicklow	248	0	1 807	2 104	3 882	41 720	20 228	0	69 990
Sub Total	35 648	74 490	644 568	35 886	99 517	1 049 703	444 430	16 550	2 400 791
Cork	124	6 420	550	1 360	6 780	18 572	17 200	0	51 006
Dublin	434	12 950	112 191	9 760	0	63 567	63 057	25 000	286 959
Galway	51	1 175	6 685	2 180	900	2 147	7 311	0	20 449
Limerick	62	0	37 848	2 400	10 404	13 507	6 000	0	70 221
Waterford	62	510	1 885	800	6 987	11 160	4 940	0	26 344
Sub-total	733	21 055	159 159	16 500	25 070	108 953	98 508	25 000	454 978
Total	36 381	95 545	803 727	52 386	124 587	1 158 656	542 938	41 550	2 855 769

Table 32: Total Amount Received in Fees by Type of Fee

Type of fee	2000	2001	2002	2003
Application fees, gross	32 638 620	32 091 052	26 925 526	41 425 950
Application fees, refunds	537 387	956 796	681 349	820 442
Application fees, net	32 101 233	31 134 256	26 244 177	40 605 508
Retention fees, net	-	-	-	3 111 959 ¹
Other fees total	871 927	1 582 659	2 442 787	2 855 769
Total	32 973 160	32 716 915	28 686 964	46 573 236

¹ Amount of retention fees not isolated prior to 2003

Tables 33 and 34

Tables 33 and 34 give a breakdown of staff by full / part time and technical / administrative. The category 'part time' includes part time employees as well as full time employees who are involved in planning work for only part of their time. The total staff complement has been calculated as the sum of technical and administrative staff. Technical staff include fire officers, health officers, etc., who are for part of their time involved with planning control duties.

Over three-quarters of staff involved in planning in the local authorities are full time. Reporting on the category "part-time" has been uneven and the category may not be correctly interpreted by all authorities.

Table 33: Staff

Year	Full time	Part time	Technical	Administrative	Total
1998	810	304	589	525	1 114
1999	955	334	661	628	1 289
2000	1 000	333	733.5	599.5	1 333
2001	1 185	355	798.5	741.5	1 540
2002	1 376.5	317.5	845	849	1 694
2003	1 490	305	942	853	1 795

Table 34: Staff by Area

Area	Technical		Administrative		Total
	Full time	Part time	Full time	Part time	
Carlow	8	5	9	1	23
Cavan	8	19	11	8	46
Clare	23	15	26	0	64
Cork	69	12	90	6	177
Donegal	33	19	26	3.5	82
Dun Laoghaire-Rathdown	34	0	39	0	73
Fingal	42	0	60	0	102
Galway	35	1	32.5	0	68.5
Kerry	21	3	24	4	52
Kildare	29	16	31	6	82
Kilkenny	17	1	14	2	34
Laois	10	0	12	0	22
Leitrim	5	1	8	1	15
Limerick	22	0	18	0	40
Longford	7	5	8	2	22
Louth	15	12	18	6	51
Mayo	13	3	15	3	34
Meath	17	1	29	2	49
Monaghan	8	12	9	3	32
North Tipperary	10	0	15	0	25
Offaly	14	9	13	2	38
Roscommon	10	10	8.5	0	28.5
Sligo	9	23	17	0	49
South Dublin	31	5	43	0	79
South Tipperary	17	4	14	8	43
Waterford	10.5	0	13	0	23.5
Westmeath	17	16	13	13	59
Wexford	21	9	28	3	61
Wicklow	46	6	26.5	0	78.5
Sub Total	601	207	670.5	73.5	1 552
Cork	16	7	12	3	38
Dublin	77	0	67	0	144
Galway	12	1	14	0	27
Limerick	6	7	6	2	21
Waterford	3.5	5	5	0	13.5
Sub - Total	114	20	104	5	243
Total	715	227	774.5	78.5	1 795

IV Other

Table 35

The Local Government (Planning and Development) Act, 1990, which consolidated and amended the law on planning compensation, took effect from June 10, 1990. Since 2002 planning compensation is provided for by Part XII of the Planning and Development Act, 2000. Table 35 provides a summary from the year 1996 onwards and gives additional information on the number and cost of claims which were 'otherwise disposed of'. In 2003, 4 claims were made to the value of €6.14m.

Table 35 : Claims for Compensation¹

Year	Claims				'Disposed'	
	No	Amount €	Number Paid	Amount Paid €	No	Value €
1996	0	0	1	33 286	0	0
1997	5	2 945 792	0	0	5	2 945 792
1998	7	12 798 960	0	0	3	7 364 481
1999	0	0	0	0	0	0
2000	9	42 216 886	0	0	1	0
2001	0	0	0	0	0	0
2002	5	28 642 705	1	380 921	0	0
2003	4	6 140 000	0	0	3	2 000 000

¹ Local Government (Planning and Development) Act, 1990 and Planning and Development Act, 2000 - from 11/03/2002

Tables 36, 37, 38, 39, and 40

Table 36 gives the number of agreements made under S47 of the 2000 Planning Act. These are formal agreements (covenants) between the planning authority and the landowner. The use of this provision varies widely between planning authorities.

Table 37 shows the number of Tree Preservation Orders in force by the end of the years 2001, 2002 and 2003 by area.

The use of S42 of the 2000 Act, which allows an extension of the five-year validity period of a permission where development is under construction, is recorded in Table 38. Table 39 records the applications made for licences of appliances and cables along a public road under S 254 of the Planning and Development Act, 2000.

Table 40 records the levels of use of various sections of the Planning Acts.

Table 36: Agreements under S47 of the 2000 Planning Act

	1998	1999	2000	2001	2002	2003
Carlow	35	22	46	9	0	0
Cavan	0	0	0	0	0	0
Clare	27	57	0	6	16	7
Cork	143	304	651	817	804	800
Donegal	22	26	7	22	22	23
Dun Laoghaire/Rathdown	7	0	3	4	0	0
Fingal	0	0	0	1	0	0
Galway	0	0	0	0	0	0
Kerry	0	18	16	0	9	5
Kildare	121	81	44	56	0	11
Kilkenny	0	0	20	10	26	23
Laois	19	37	59	59	77	48
Leitrim	0	0	0	0	0	2
Limerick	8	3	1	0	0	1
Longford	0	0	0	0	0	0
Louth	0	19	2	201	0	1
Mayo	0	0	15	0	0	0
Meath	23	19	8	9	42	141
Monaghan	2	15	10	6	7	11
North Tipperary	1	1	0	3	5	0
Offaly	3	2	1	0	13	18
Roscommon	3	4	0	5	29	34
Sligo	13	24	19	26	40	14
South Dublin	0	0	1	0	0	0
South Tipperary	2	6	12	8	8	12
Waterford	4	7	5	2	5	10
Westmeath	19	15	5	9	0	1
Wexford	0	7	3	11	75	160
Wicklow	87	76	54	24	25	53
Sub-total	539	743	982	1 288	1 203	1 375
Cork	0	0	1	1	1	0
Dublin	0	0	0	1	0	0
Galway	0	0	0	0	0	0
Limerick	0	0	0	0	0	0
Waterford	0	0	1	0	0	0
Sub-total	0	0	2	2	1	0
Total	539	743	984	1 290	1 204	1 375

Table 37: Tree Preservation Orders by Area

	No. of orders in force at end of 2001	No. of orders in force at end of 2002	No. of orders in force at end of 2003
Carlow	1	0	1
Cavan	0	0	0
Clare	0	0	0
Cork	0	0	0
Donegal	0	0	0
Dun Laoghaire/Rathdown	0	9	9
Fingal	0	0	0
Galway	0	0	0
Kerry	0	0	0
Kildare	0	0	0
Kilkenny	3	0	4
Laois	0	0	0
Leitrim	0	0	0
Limerick	2	0	2
Longford	0	0	0
Louth	4	4	33
Mayo	0	0	0
Meath	7	0	0
Monaghan	0	0	0
North Tipperary	3	3	3
Offaly	0	7	0
Roscommon	0	0	0
Sligo	1	2	0
South Dublin	0	0	0
South Tipperary	0	0	0
Waterford	24	24	24
Westmeath	17	17	0
Wexford	0	0	0
Wicklow	46	45	45
Sub-total	108	111	121
Cork	9	0	0
Dublin	0	0	0
Galway	0	0	0
Limerick	0	2	2
Waterford	0	2	0
Sub-total	9	4	2
Total	117	115	123

**Table 38: Extension of Duration of Permission for Substantially Completed Development
(S4 1982 Act\ S42 2000 Act)¹**

Year	Applied	Extensions Granted	Refused
1994	124	98	12
1995	142	112	19
1996	152	113	28
1997	134	106	20
1998	112	79	20
1999	80	60	10
2000	138	117	45
2001	103	69	22
2002	173	112	43
2003	202	131	36

¹ Applies from 11 March 2002 onwards

Table 39: S 254 of 2000 Act Licence Applications

Area	Applications	Granted	Refused
Carlow	9	9	0
Cavan	20	20	0
Clare	32	22	4
Cork	459	449	10
Donegal	7	6	0
Dun Laoghaire-Rathdown	127	127	0
Fingal	13	10	3
Galway	13	13	0
Kerry	57	32	0
Kildare	38	25	6
Kilkenny	45	33	5
Laois	9	7	2
Leitrim	12	9	3
Limerick	4	2	0
Longford	0	0	0
Louth	61	57	4
Mayo	3	3	0
Meath	20	15	0
Monaghan	4	4	0
North Tipperary	10	7	1
Offaly	20	20	0
Roscommon	14	4	0
Sligo	6	2	4
South Dublin	133	133	0
South Tipperary	86	86	0
Waterford	283	281	3
Westmeath	56	56	0
Wexford	61	45	16
Wicklow	5	5	0
Sub-total	1607	1482	61
Cork	11	7	4
Dublin	50	45	5
Galway	55	52	3
Limerick	40	32	3
Waterford	4	0	2
Sub-total	160	136	17
Total	1767	1618	78

Table 40: Use of Miscellaneous Sections of the 2000 Planning Act¹

Section	1998	1999	2000	2001	2002	2003
S44 2000 Act	0	3	0	0	0	1
S46 2000 Act	0	0	33	79	0	8
S206 2000 Act	0	0	1	0	1	0
S207 2000 Act	0	0	0	0	0	0
S209 2000 Act	1	0	0	0	0	0
S182 2000 Act	36	30	26	11	25	386

¹ See Appendix D for titles of these sections

Appendix A

- Planning Fee Classes of Development

Planning and Development Regulations, 2001		Local Government (Planning and Development) Regulations, 1994
Class of Development	Title of Class of Development	Class of Development
1	Houses	1 ["Dwellings"]
2	Domestic extensions etc.	2
3	Agricultural buildings and structures, buildings for keeping greyhounds	3 and 4
4	Other Buildings (other than classes 1, 2 or 3)	5
5	Intensive agriculture, afforestation, peat extraction	6
6	Use of land for mining or for dumping	7
7	Use of land for caravanning, parking of vehicles or open storage	8
8	Provision of plant and machinery, or of storage tank or structures	9
9	Advertisements	11
10	Electricity lines or overhead telecommunications lines	12
11	Use of land as a golf course or as a pitch and putt course	13
12	Use of land as a burial ground	14
13	Development not coming within any of the foregoing classes	10 and 15

Appendix B

- Enactments and Regulations relating to Physical Planning (to end 2003)

Planning and Development Acts

Local Government (Planning and Development) Act, 1963 (No. 28 of 1963)

Local Government (Planning and Development) Act, 1976 (No. 20 of 1976)

Local Government (Planning and Development) Act, 1982 (No. 21 of 1982)

Local Government (Planning and Development) Act, 1983 (No. 28 of 1983)

Local Government (Planning and Development) Act, 1990 (No. 11 of 1990)

Local Government Act, 1991 (Sections 44 and 45) (No. 11 of 1991)

Local Government (Planning and Development) Act, 1992 (No. 14 of 1992)

Local Government (Planning and Development) Act, 1993 (No. 12 of 1993)

Local Government (Planning and Development) Act, 1998 (No. 9 of 1998)

Local Government (Planning and Development) Act, 1999 (No. 17 of 1999)

Planning and Development Act, 2000 (No. 30 of 2000)

Planning and Development (Amendment) Act, 2002 (No. 32 of 2002)

Planning and Development Regulations

European Communities (Environmental Impact Assessment) Regulations, 1989 (S.I. No. 349 of 1989)

European Communities (Environmental Impact Assessment) (Amendment) Regulations, 1994 (S.I. 84 of 1994)

Local Government (Planning and Development) Regulations, 1994 (S.I. No. 86 of 1994)

Local Government (Planning and Development) Regulations, 1995 (S.I. No. 69 of 1995)

Local Government (Planning and Development) Regulations, 1995 (S.I. No. 75 of 1995)

Local Government (Planning and Development) Regulations, 1996 (S.I. No. 100 of 1996)

Local Government (Planning and Development) Regulations, 1996 (S.I. No. 101 of 1996)

Local Government (Planning and Development) Regulations, 1997 (S.I. No. 78 of 1997)

Local Government (Planning and Development) Regulations, (No.2) 1997 (S.I. No. 121 of 1997)

Local Government (Planning and Development) (No.3) Regulations, 1997 (S.I. No. 261 of 1997)

Local Government (Planning and Development) (Fees) (Amendment) Regulations, 1998 (S.I. No. 119 of 1998)

Local Government (Planning and Development) Regulations, 1998 (S.I. No. 124 of 1998)

Local Government (Planning and Development) (Fees) (Amendment) (No. 2) Regulations, 1998 (S.I. No. 128 of 1998)

Local Government (Planning and Development) (No. 2) Regulations, 1998 (S.I. No. 194 of 1998)

Local Government (Planning and Development) Regulations, 1999 (S.I. No. 92 of 1999)

European Communities (Environmental Impact Assessment) (Amendment) Regulations, 1999 (S.I. No. 93 of 1999)

Local Government (Planning and Development) (No.2) Regulations, 1999 (S.I. No. 431 of 1999)

Local Government (Planning and Development) Regulations, 2000 (S.I. No. 181 of 2000)

Planning and Development Act, 2000 (Commencement) Order, 2000 (S.I. No. 349 of 2000)

Local Government (Planning and Development) Regulations, 2000 (S.I. No. 350 of 2000)

Planning and Development Act, 2000 (Commencement) (No.2) Order, 2000 (S.I. No. 449 of 2000)

European Communities (Environmental Impact Assessment) (Amendment) Regulations, 2000 (S.I. No. 450 of 2000)

Local Government (Planning and Development) (No. 2) Regulations, 2000 (S.I. No. 457 of 2000)

Local Government (Planning and Development) (No. 2) Regulations, 2000 (S.I. No. 458 of 2000)

Local Government (Planning and Development) General Policy Directive (Shopping) 1998 (Revocation) Order, 2001 (S.I. No. 1 of 2001)

Planning and Development Act, 2000 (Commencement) Order, 2001 (S.I. No. 153 of 2001)

Planning and Development (Licensing of Outdoor Events) Regulations, 2001 (S.I. No. 154 of 2001)

Planning and Development Act, 2000 (Commencement)(No. 2) Order, 2001 (S.I. No. 335 of 2001)

Planning and Development (Appointment of Chairperson and Ordinary Members of An Bord Pleanála) Regulations, 2001 (S.I. No. 336 of 2001)

Local Government (Planning and Development) (Fees) Regulations, 2001 (S.I. No. 525 of 2001)

Local Government (Planning and Development) (Amendment) Regulations, 2001 (S.I. No. 539 of 2001)

Planning and Development Act, 2000 (Commencement) (No. 3) Order, 2001 (S.I. No. 599 of 2001)

Planning and Development Regulations, 2001 (S.I. No. 600 of 2001)

Planning and Development Regulations, 2002 (S.I. No. 70 of 2002)

Planning and Development (No. 2) Regulations, 2002 (S.I. No. 149 of 2002)

Planning and Development Regulations, 2003 (S.I. No. 90 of 2003)

Planning and Development (Regional Planning Guidelines) Regulations, 2003 (S.I. No. 175 of 2003)

Planning and Development Act, 2000 (Certification of Fairground Equipment) Regulations, 2003 (S.I. No. 449 of 2003)

Planning and Development Act, 2000 (Commencement) Order, 2003 (S.I. No. 450 of 2003).

Planning and Development General Policy Directives

Local Government (Planning and Development) General Policy Directive, 1982 (S.I. No. 264 of 1982)

Local Government (Planning and Development) General Policy Directive, 1988 (S.I. No. 317 of 1988)

Local Government (Planning and Development) General Policy Directive, (Shopping), 1998 (Revocation Order), 2001 (S.I. No. 1 of 2001)

Appendix C:

- Other Publications

Other publications dealing with planning statistics include:

- Planning Statistics (Quarterly), Department of the Environment, Heritage and Local Government
- Statistical Release - Planning Permissions (Quarterly), Central Statistics Office
- Environment Bulletin (Quarterly), Department of the Environment, Heritage and Local Government
- An Bord Pleanála Annual Report