

# 26<sup>th</sup> IO AG Meeting

February 16<sup>th</sup>, 2022

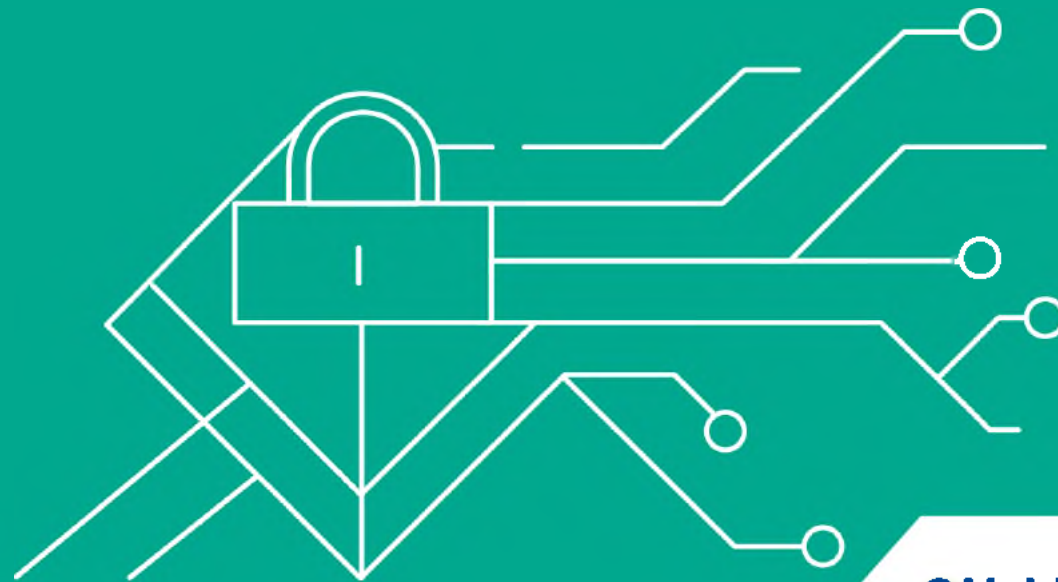
# Summary

1. History of the IO integrated planning
2. Highlights of version 1.0
3. Highlights of version 1.1
4. Member states package content
5. Member states comments
6. IO Integrated Planning V1.1 overview

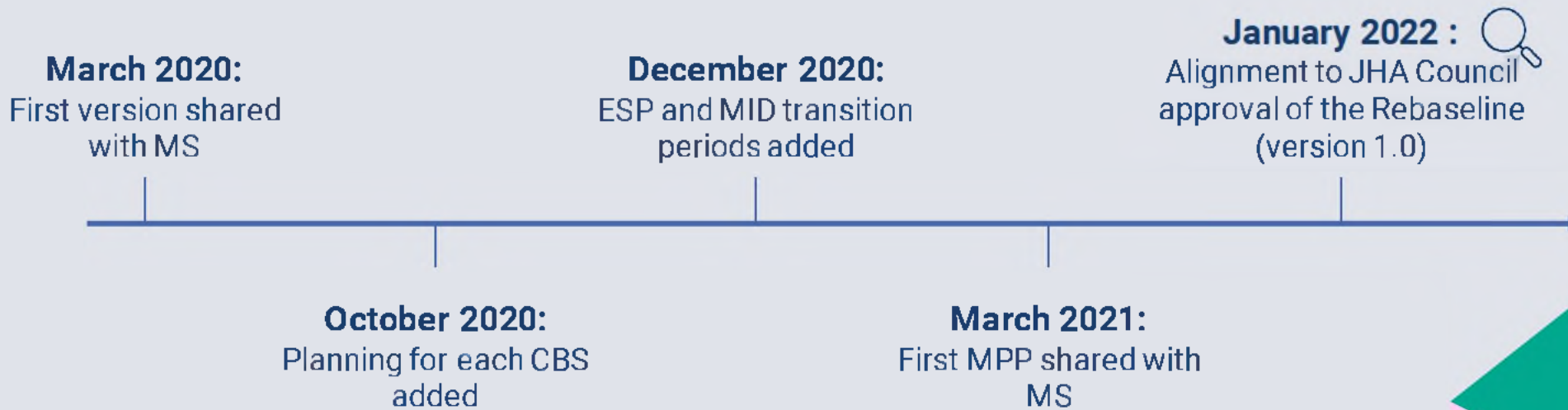


1 |

# History of the IO integrated planning

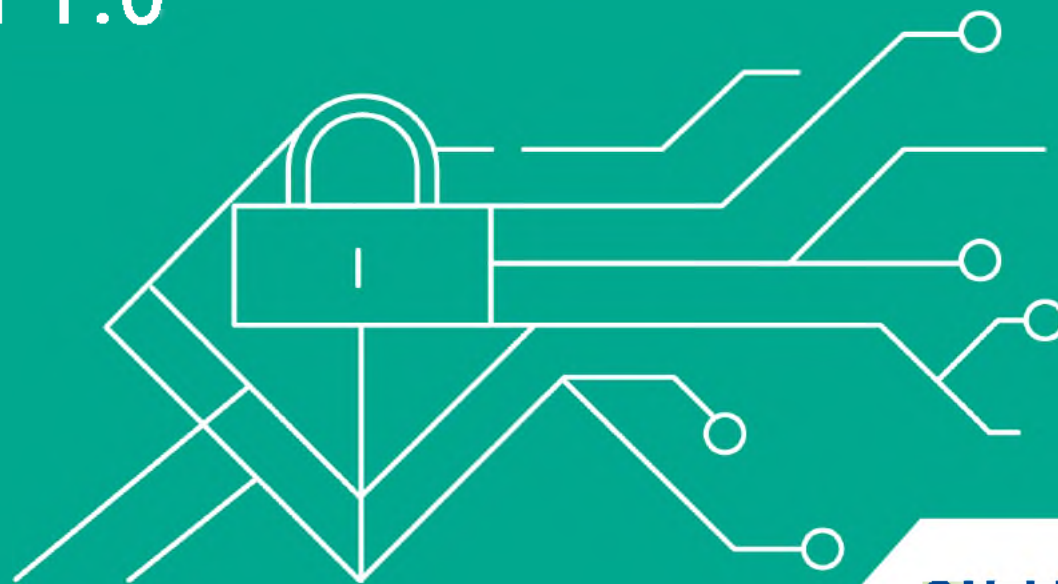


# Major improvements in planning shared with MS



# 2 |

## Highlights of version 1.0



# Zoom on version 1.0 improvements

- Alignment to JHA Council approval of the Rebaseline (version 1.0)
- New project added for SIRENE for MID transition period
- New project added for ESP for IO Art20 and Art22 (LEA tab)
- ICDs in the scope of CBS CT added
- Review of the assumptions,



# Highlights on key dates

## Entry into operation of central business systems :

- ETIAS/ECRIS → **mid of May 2023**
- EES for ETIAS/IO + VIS/SIS for ETIAS → **mid of May 2023**
- VIS/SIS for IO → **mid of December 2023**
- Eurodac → **October 2024**

## Entry into operation of central interoperability components :

- ESP/CIR/MID/CRRS/sBMS for ECRIS → **mid of May 2023**
- sBMS for SIS → **mid of December 2023**
- sBMS for Eurodac → **October 2024**

## Transition Periods starting and ending dates :

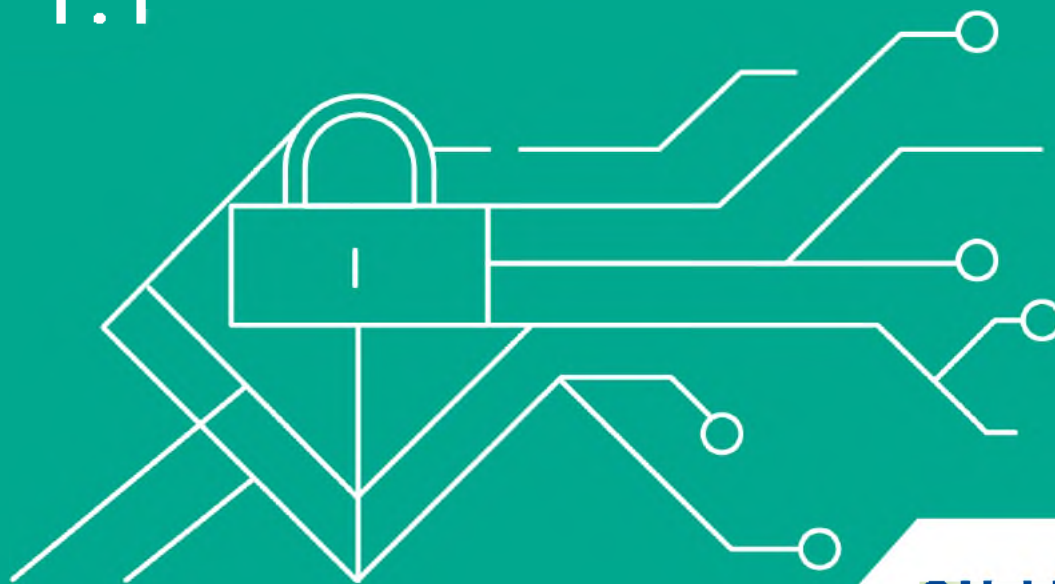
- ESP → **from mid of May 2023 to mid of May 2025**
- MID → **from mid of December 2023 to mid of December 2024**





# 3 |

## Highlights of version 1.1





# Zoom on version 1.1 improvements

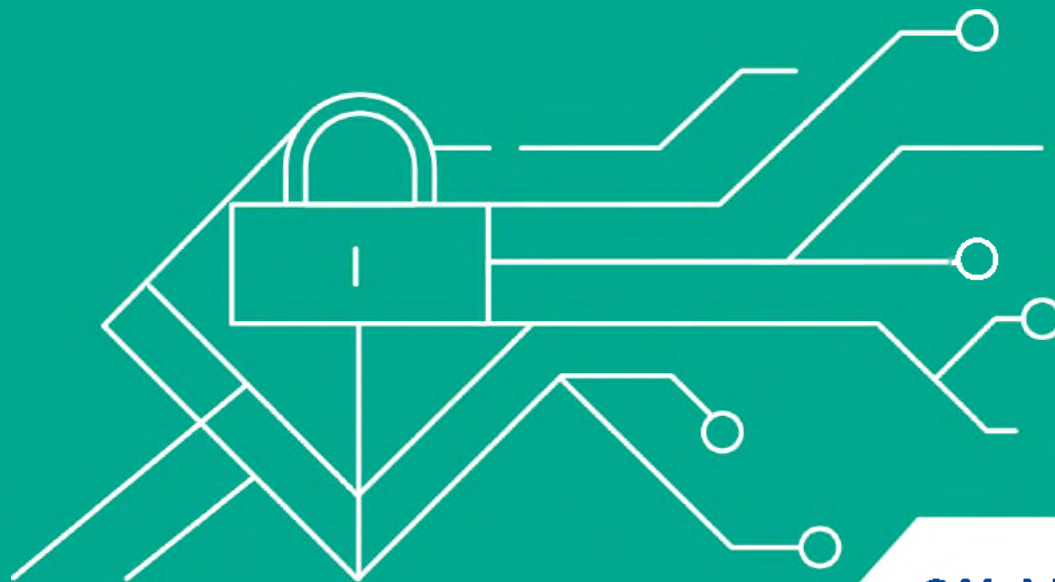
## Changes made in the V1.1 :

- **Central IO components** : ICDs have been split per system and version numbering added :
  - ESP : dates updated,
  - CIR (inc. MID) : dates updated,
  - CRRS : dates updated,
  - CSSIM : dates updated.
- **EURODAC** :
  - External dependencies removed,
  - Data migrations dates updated,
  - ICDs dates updated,
  - EiO date updated for central.
- **EES** : ICDs and CSSIM dates updated
- **ETIAS** : ICDs and CSSIM dates updated
- **ECRIS** : ICDs and CSSIM dates updated
- **High-level plan updated**
- **Assumption list updated** with assumptions 19 and 20



4 |

## Member states package content



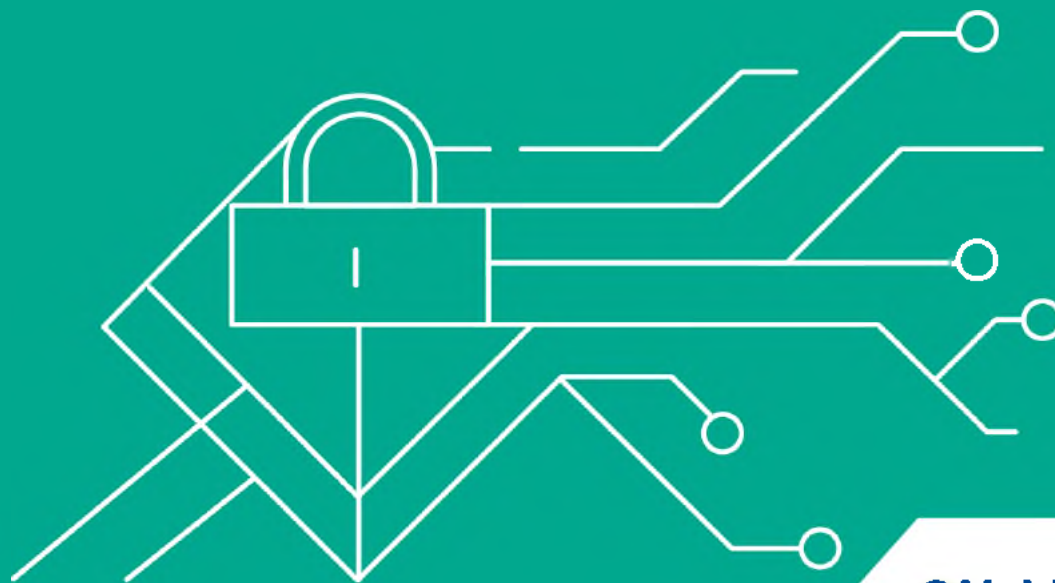
# MS package

1. **The IO Integrated planning in XLS format** → It gives a user-friendly view of the different CBS plans
2. **The IO Integrated planning in MPP format** → It ensures the dependencies within a CBS and between CBSs are correctly tracked
3. **The IO Integrated planning implementation plan** → It emphasizes the different stakeholders, activities and milestones for MS in a textual format.



5 |

## Member states comments



# Highlights on some MS comments

## ESP and MID transition periods impact on MS:

- EES/VIS/EURODAC:
  - MS can choose the date during the MID transition period for the implementation of the CBS/IO ICD, ESP+CIR ICDs for MID yellow link resolution
  - MS can choose the date during the ESP transition period for the implementation of the ESP ICD for CBS queries
- SIS:
  - National SIRENE must implement the ESP and MID ICDs for MID links resolution before the start of the MID transition period
  - MS have the option to use or not the ESP ICD for SIS queries. If they choose to do so, it has to be done during the ESP transition period.
- ETIAS/ECRIS-TCN:
  - MS must implement all ICDs (CBS/IO ICD, ESP ICD, CIR ICDs) from the EiO. No transition period apply.

# Overview of MS comments

## LEA access via ESP :

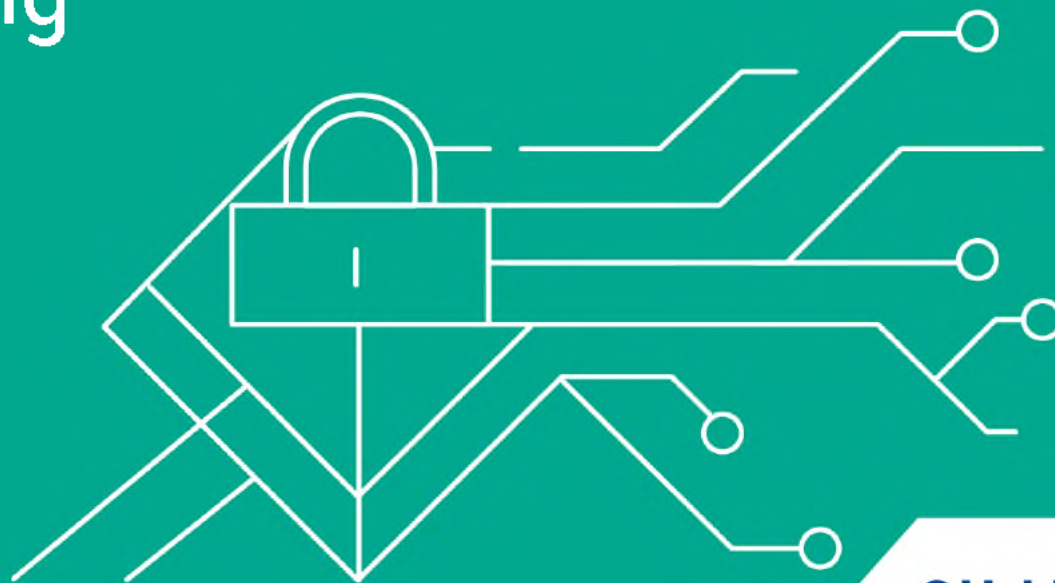
- (Art20 and Art22 queries) is independent from any CBS and is therefore depicted as a separate project in the IO Integrated Planning. It will require dedicated CT of the LEA national systems with ESP.

## Versioning of IO and CBS ICDs :

- MS need the combination of IO and CBS/IO ICDs to integrate their national systems with IO
- euLISA is assessing proper integration of IO and CBS/IO ICDs
- Draft/Stable/Final has been replaced by versioning of the IO and CBS/IO ICDs to reduce confusion
- There will be further versions in the future of the IO and CBS/IO ICDs as required

6 |

## I0 Integrated Planning V1.1 overview





Switch on the Excel file

# THANK YOU!


## **eu-LISA**

European Union Agency for the Operational  
Management of Large-Scale IT Systems in  
the Area of Freedom, Security and Justice


Vesilennuki 5, 10415 Tallinn, Estonia

[www.eulisa.europa.eu](http://www.eulisa.europa.eu)

 [facebook.com/agencyeulisa/](https://facebook.com/agencyeulisa/)

 [twitter.com/EULISA\\_agency](https://twitter.com/EULISA_agency)

 [linkedin.com/company/eulisa/](https://linkedin.com/company/eulisa/)

 [youtube.com/c/eulisaAgency](https://youtube.com/c/eulisaAgency)