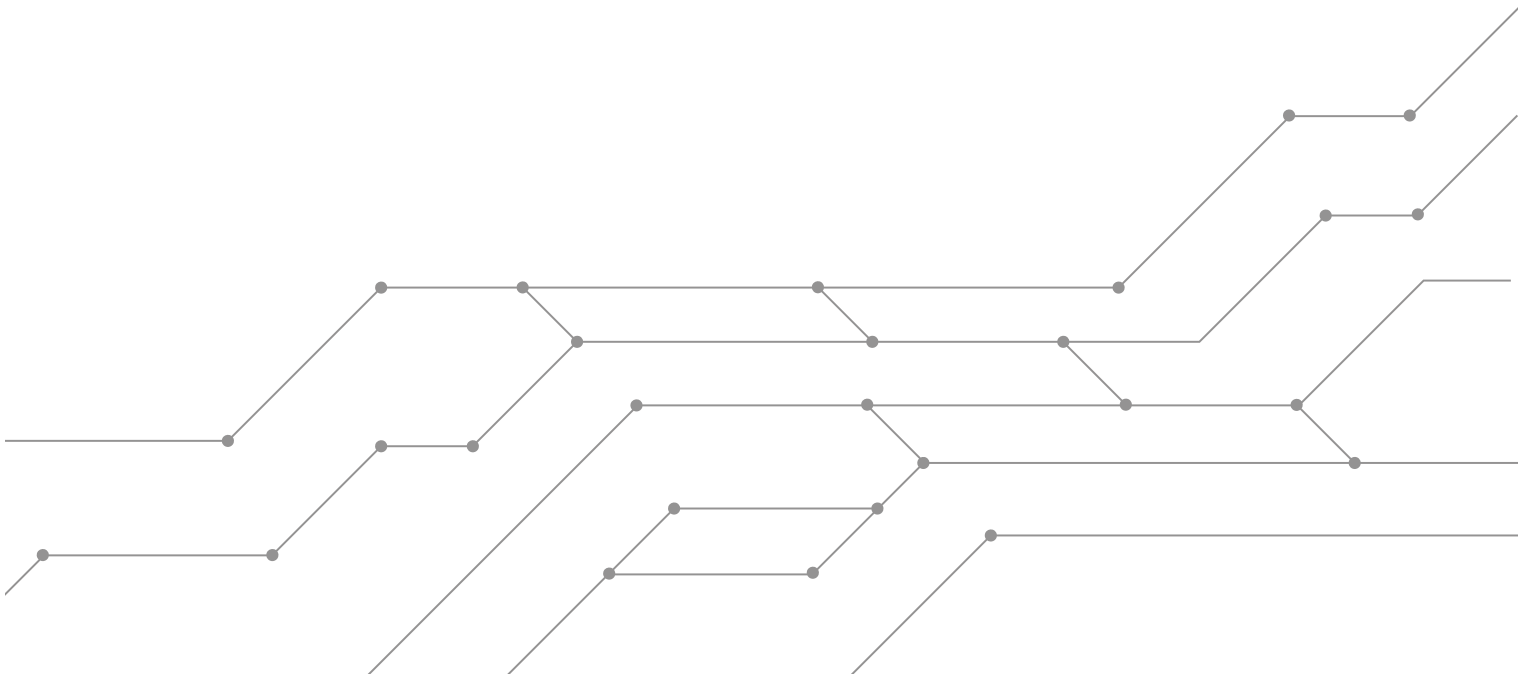




PALANTIR FOUNDRY FOR CUSTOMS

INTELLIGENT INTEGRATION, ANALYSIS, AND TRIAGE



INTRODUCTION

In a world with increasing movement of people and goods across borders, customs agencies face two main challenges: (1) how to detect, investigate, and prevent the illegal movement of goods and (2) how to ensure timely and accurate collection of duty and tax, all without increasing trade friction. There is great promise in the concept of utilising the full spectrum of data available to meet these challenges, but inflexibility of legacy systems, siloed data landscapes, and complex data protection and compliance regimes mean that these promises often remain unfulfilled.

Pre-arrival data such as courier manifests, advance passenger information, and transit records provide meaningful insight on traffic in and out of the country, but these forms are often processed by separate departments. Other data that may be relevant — ANPR data, intelligence reports, and prior offence records — may be held by entirely different agencies, creating data silos that prevent officials from gaining a comprehensive view of suspicious persons and the goods they move. And data protection regulations mean that even if sharing is possible, it has to be done in a way that complies with strict policies and protocols.

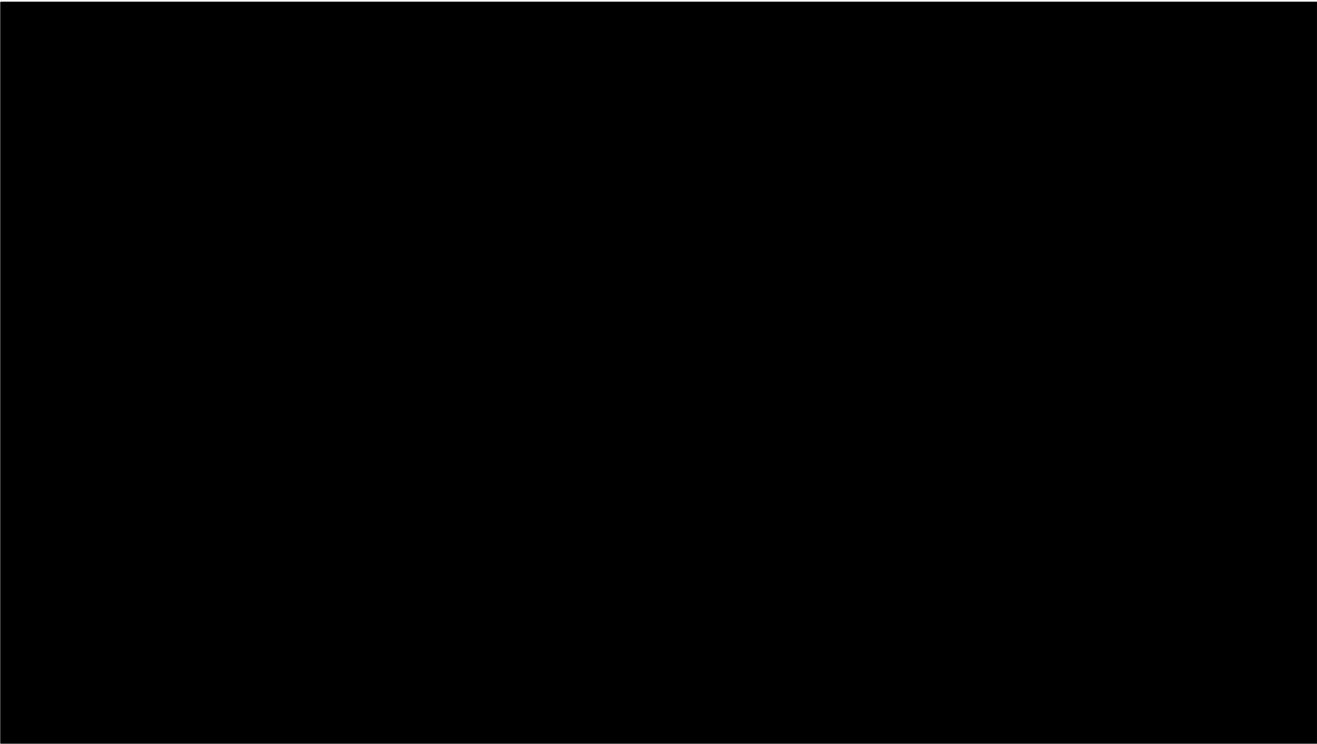
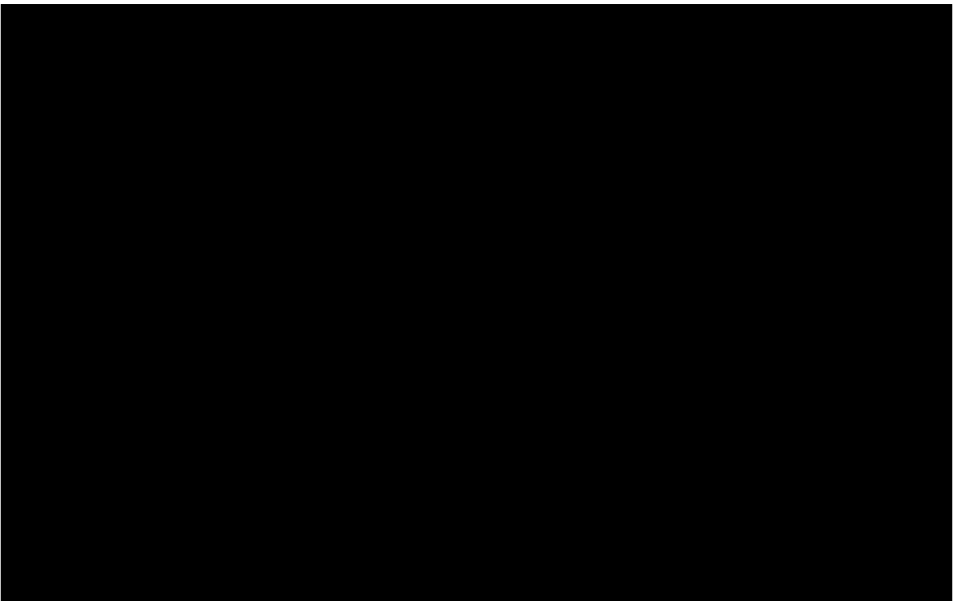
Palantir Foundry solves these problems. A proven solution for data integration and analysis widely deployed in large government agencies and commercial organisations, **Foundry can serve as an analytical hub for customs agencies, fusing together their datasets and surfacing irregular activity.** Foundry allows agencies to detect attempts to traffic illegal or dangerous goods in or out of the country more effectively and combat threats and crimes through enhanced intelligence sharing and inter-agency collaboration. Its knowledge management capabilities lead to improved coordination of inspections and provide an easy way to track collection of duty and tax. And its built-in data protection infrastructure enables organisations to meet their compliance obligations programmatically and system-wide, rather than in an ad hoc manner.

FOUNDRY FOR CUSTOMS

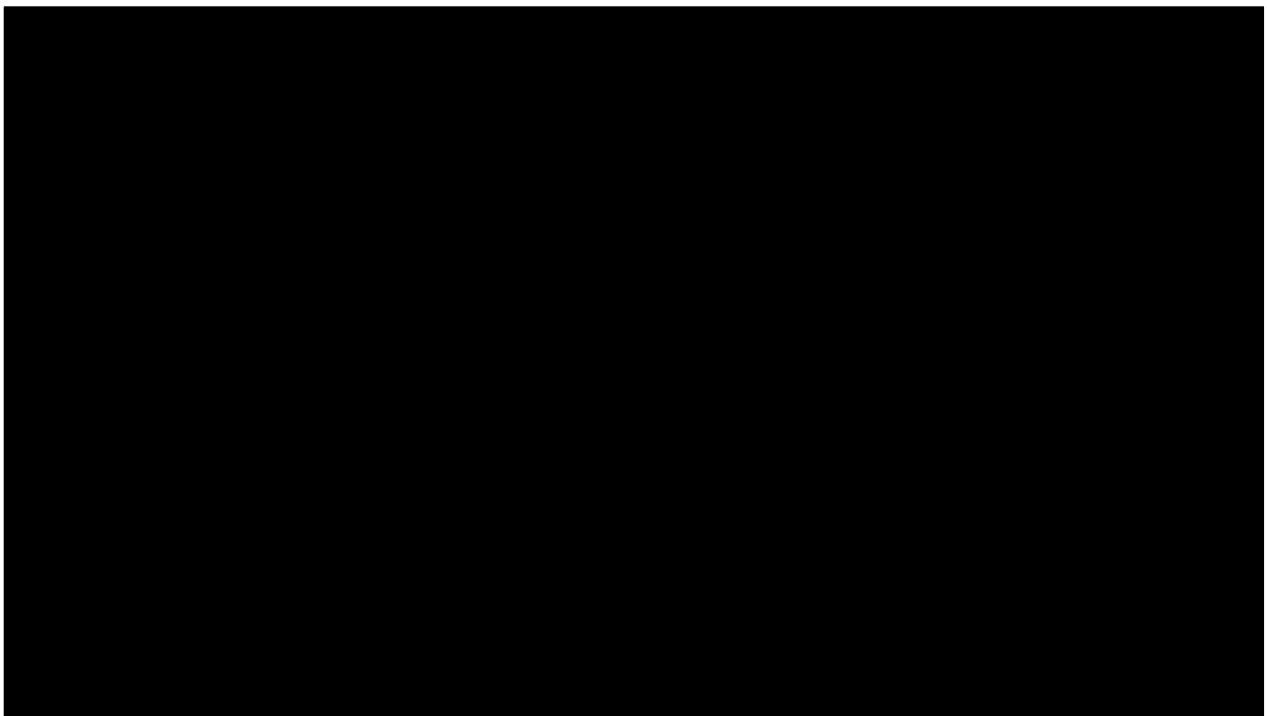
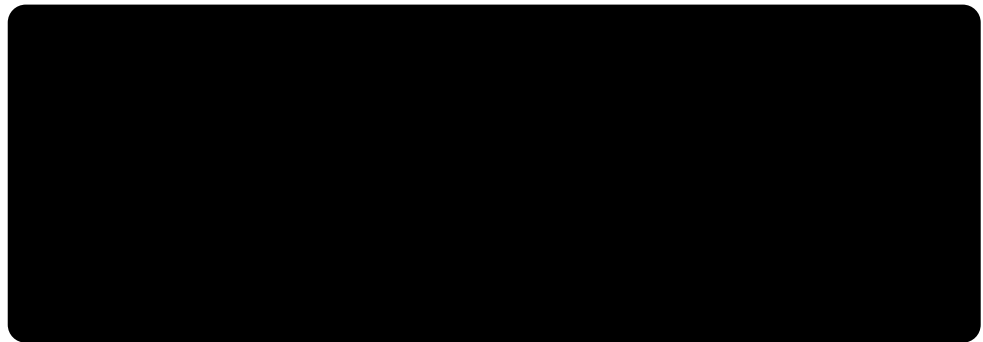
At its core, Foundry provides a **platform for data centralisation, data integration, information analysis, and communication of analytical results.** It is data-agnostic and can serve as a single hub for all types of data within an enterprise. Data can be structured or unstructured, clean or complicated, in any format and from multiple sources. Foundry creates a single source of truth for people throughout an organisation to contribute to and consume. Built-in applications enable users to drill down on any of the datasets contained in the system, examining correlations and connections in the data and visualising it in intuitive, easy-to-understand ways.

They can merge and join different datasets, layering in any metrics that may shed light on their current analytical questions. Is there a pattern to the irregularities shown in certain courier manifests? What can ANPR data at border crossings tell us about the goods that might be in those vehicles? Are we collecting tax in the most effective way? Foundry can help agencies answer these questions and more.

FOUNDRY FOR
CUSTOMS
(CONTINUED)



FOUNDRY FOR
CUSTOMS
(CONTINUED)



Foundry facilitates **collaboration without sacrificing data security or integrity**; built-in capabilities for data protection contribute to a high-integrity enterprise knowledge base. Foundry retains the complete history of all data that enters the system, so administrators can see how it is being used, and by whom. Versioning and provenance controls ensure that users can always understand and retrace how a version of a dataset was generated. These capabilities also provide the complete records required for auditing purposes.

Because of these protections, teams can work together freely, building on one another's analysis and sharing their results without fear that they will inadvertently access or share protected data. For customs officials, this provides an easy way for different departments to share intelligence on the same case or quickly export their results to share with partner agencies.

FOUNDRY FOR CUSTOMS (CONTINUED)

Foundry was designed with the **strictest protections of privacy and civil liberties** in mind. Its industry-leading data protection technologies enable compliance with legislation such as the GDPR. Foundry provides a policy-aware, accountable data infrastructure that enables creative use of data within the constraints defined by law, policy, and culture, so agencies can rest assured knowing they are protecting their sensitive information.

FOUNDRY IN ACTION

Palantir Foundry is deployed with our customers all around the world, at government agencies as well as in industries as diverse as manufacturing and pharmaceuticals, insurance and shipping. Improvements made on site with customers are folded back into the main product, ensuring that all Palantir clients benefit from the full scope of Foundry's capabilities.

