



**Next  
Gen  
EU**

# Launching the recovery

*A Recovery plan for Europe:*

*The Recovery and Resilience Facility*

**Health sector resilience**

29 June 2021

# A strong anchor for Health Reforms & Investments

## Recovery and Resilience Facility



1. Green Transition



2. Digital Transformation



3. Smart, Sustainable and Inclusive Growth



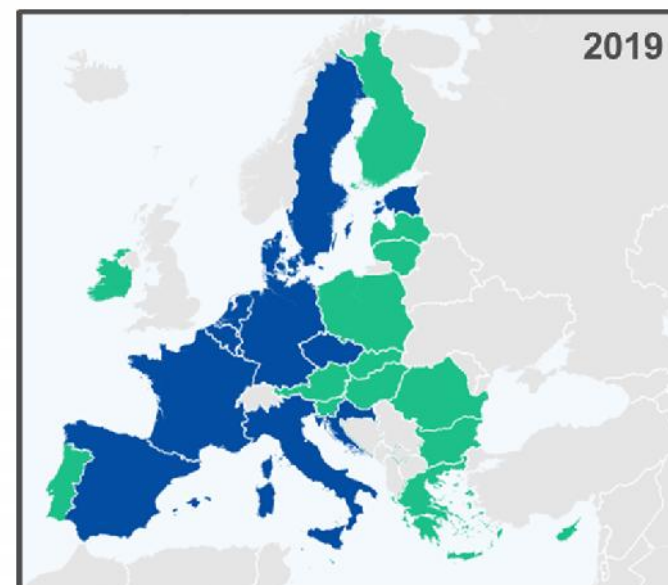
4. Social and Territorial Cohesion



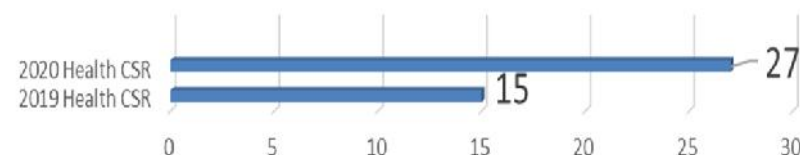
5. Health, Economic, Social and Institutional Resilience



6. Policies for the next Generation



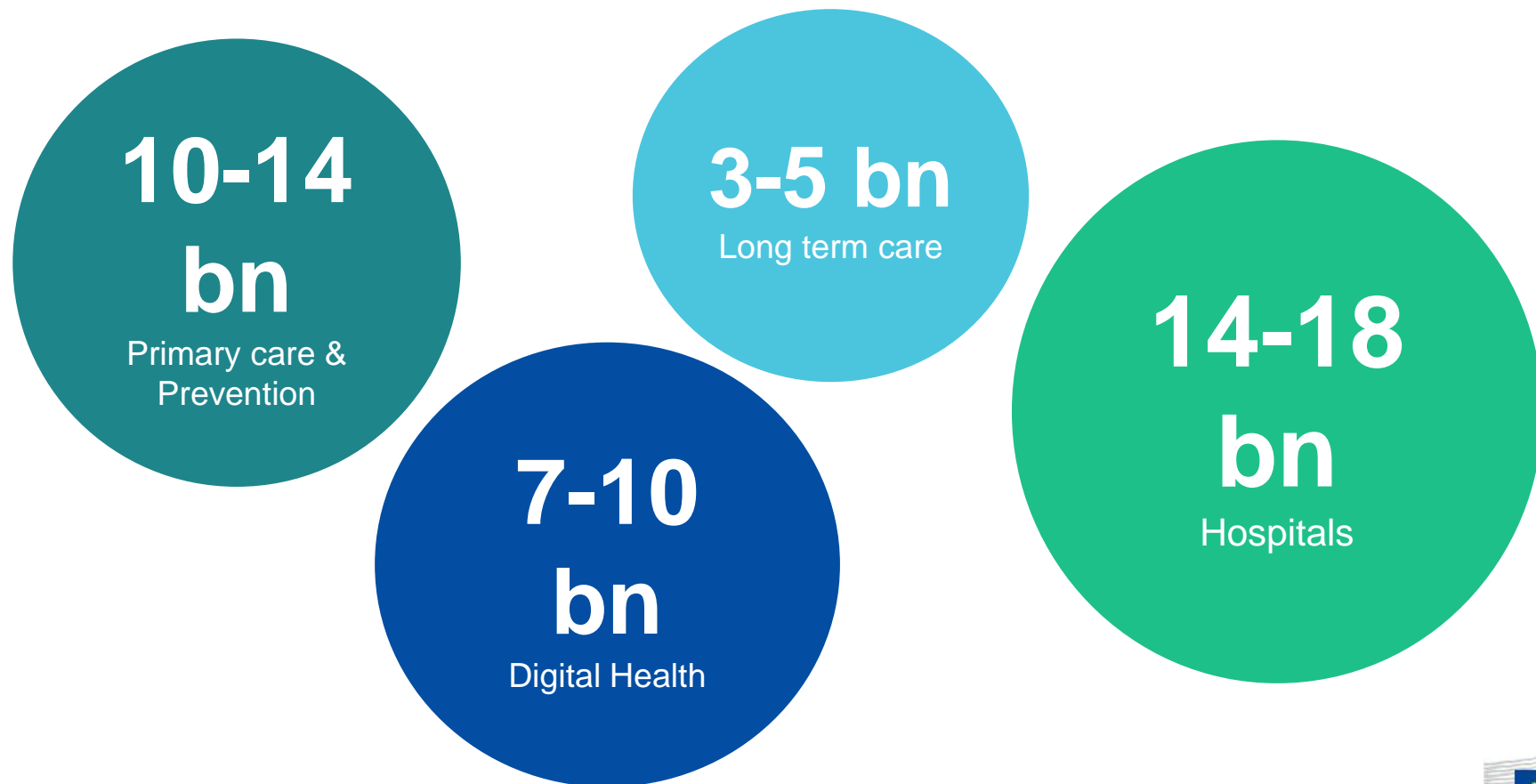
## No. of Member States Having Received Health CSRs



# Overview of health expenditure

- In total, around **EUR 50 billion** have been proposed to be spent on investments and reforms concerning **health and long-term care (LTC)**.
- **Around 10% of the total costs of the plans**
- **All RRP**s include **health-related investments**, mostly as part of a self-standing health component, but also under the umbrella of other components.
- **The relative size of grants and loans requested for health differs widely across MS.**

# Health expenditure by thematic area\*



*\*All estimated figures are preliminary based on 24 submitted plans*

# Modernising the hospital network

- **Investments in renovating and expanding hospital infrastructure**
  - **New hospitals:** building of new hospitals, establishment of centres for prevention, new infrastructure for mental health, new infrastructures for laboratories in the hospitals
  - **Modernisation of hospitals:** enhancement, modernisation and upgrade of state hospitals, modernisation of intensive care and resuscitation units
  - **Sourcing modern medical equipment:** equipment for prevention, diagnosis and treatment of cancer patients, replacement of outdated medical equipment
- **Reorganising the healthcare system**
  - **Reform elements focus on:** quality, accessibility, sustainability and resilience of health systems, healthcare workforce

# Strengthening Primary care and Prevention



## Reforms & investments

- increasing the allocation for primary care in rural areas and opening of new primary care outpatient clinics in deprived areas
- introducing mobile pharmacies into primary care
- strengthening the role of General Practitioners
- investments in primary care centres

# Addressing shortages of health workers

- RRP measures are expected to contribute to
  - addressing existing shortages
  - strengthening availability of health workers
  - ensuring their balanced regional distribution matching population needs
- RRP measures include investments and reforms such as
  - strengthening competence of health personnel to ensure quality of care
  - education of staff in mental health care
  - scholarships for specific training in general practice
  - health professionals competency platform

# A step change towards e-health



- Overall, a clear emphasis in the RRP's is put on investments contributing to the **digital transition in healthcare**.
- **12 MS included a broad range of digital (e)health measures**, which contribute towards achieving the target of allocating at least 20% of their budget to the digital transition.
- These investments focus mainly on **health information assets**, **digital upskilling** and transformation of healthcare delivery towards **telemedicine**.



# Overview of long-term care measures

- In total, around **EUR 3-5 billion** have been proposed to be spent on investments and reforms concerning **long-term care (LTC)**.
- A total of **17 MS envisage measures** to address issues the long-term care field, with 11 MS devoting RRF funds to this cause.

## Legend

- LTC measures
- No LTC measures

